

Ryan JACKSON

SENIOR, OTIS COLLEGE,
FASHION DESIGN MAJOR



805-640-5905
ryanljackson11@gmail.com

WORK EXPERIENCE

Design Intern

Taroth, Los Angeles
June 2024 - August 2024

- Brand research
- Sketching
- Accessory and garment design
- Pattern making
- Sewing and garment construction
- Fabric sourcing/selection
- Sample draping/development

Design Intern

FIFA 1904/VFILES, Los Angeles
June 2025 - August 2025

- Tech pack creation
- Garment spec-ing
- Merchandising
- Line sheet production
- Design board management
- Event coordination
- Product photography/styling



SUMMARY

I am a fashion design student at Otis College. I taught myself to sew before starting school and have since developed a strong, construction-based design ethos. I bring a fun, focused, and easygoing energy to what I do.

ACADEMIC PROFILE

Bachelor's Degree
Otis College of Design, 2023-2026
Fashion Design
Colorado College, 2018-2019, UCSB,
2020-2022, Computer Science, Economics

High-school Diploma
The Thacher School, 2013-2017
National Merit Scholar

SKILLS

- Concept ideas
- Sketching
- Pattern-making
- Moodboard development
- Sewing/sample production
- Tech packs
- Photoshop and Illustrator
- Hand sewing
- Product management
- Draping
- Fabrication

MENTORSHIPS

VFILES - LEONARDO LAWSON

- Jet-set, versatile, elevated collection
- Personal production of final look
- Outfit going to production

FIFA 1904 - MARCUS CLAYTON

- Elevated yet sporty collection
- Research/develop brand aesthetic
- Production/develo

Table of Contents

✦ **01**

Jet-Set Tailoring

✦ **02**

Gilded Outlaw

✦ **03**

Matchday Atelier

✦ **04**

Modern Uniform

Jet - Set Tailoring

This collection brings creative versatility to classic, clean tailored looks to keep my customer professional, comfortable, and stylish from the plane to the boardroom.

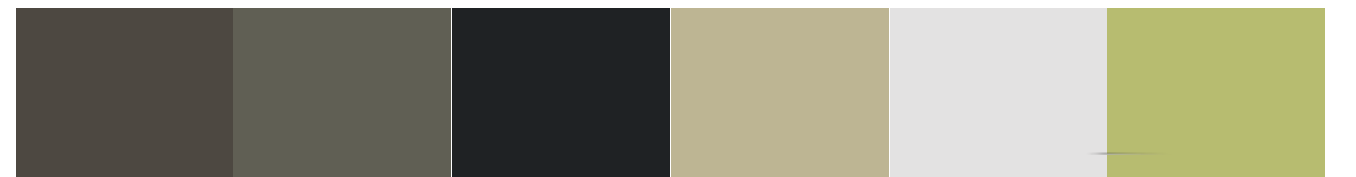
Key values:

- Versatility
- Utility
- Comfortability
- Tailored detailing
- Luxury fabrications
- Color pops





Fabrics

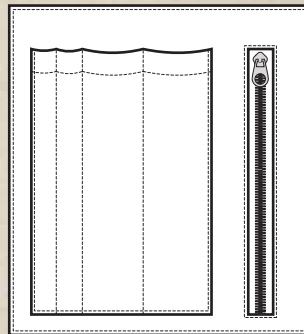


Construction Detail - Hidden Pockets

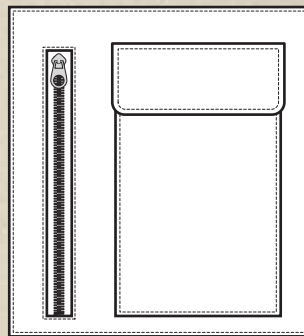


Pencil holder casings

Upper pocket allows entrance from CF



Lower zip at left to allow access from outer side zip



Secure flap pocket for phone



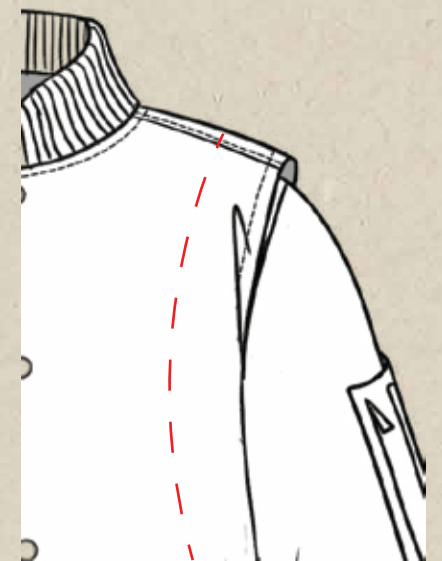
Magnetic snaps secure front panel at CF and bottom.



Side separating zip allows for easy pocket access and ability to open front flap all the way for easy packing.



Construction Detail - Gusseted Armscye



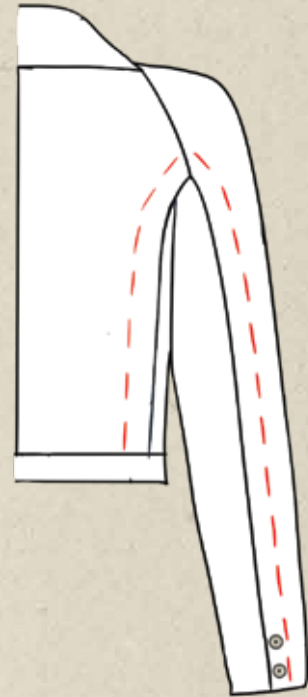
Gusset around armhole increases range of motion

Contrast facing allows for subtle pop of color.

Side front zip stops 1/2" below gusset opening



Construction Detail - Underarm/Back Gusset



Gusset extends from sleeve hem to jacket waistband hem. Allows for adjustability and increased range of motion.

Button closure secures gusset at bottom, can open to allow greater movement.

Subtle pop of color on under facings.



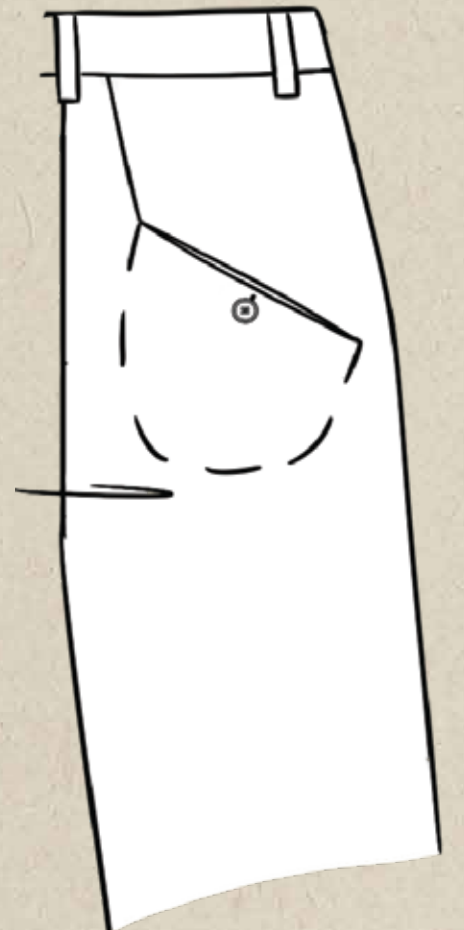
Construction Detail - Back Pocket



Pop of color applied to pocket facing.

Dart extends into pocket opening to create a pocket that requires just a single seam.

Small pocket bag maintains strength of pocket bag



Overview





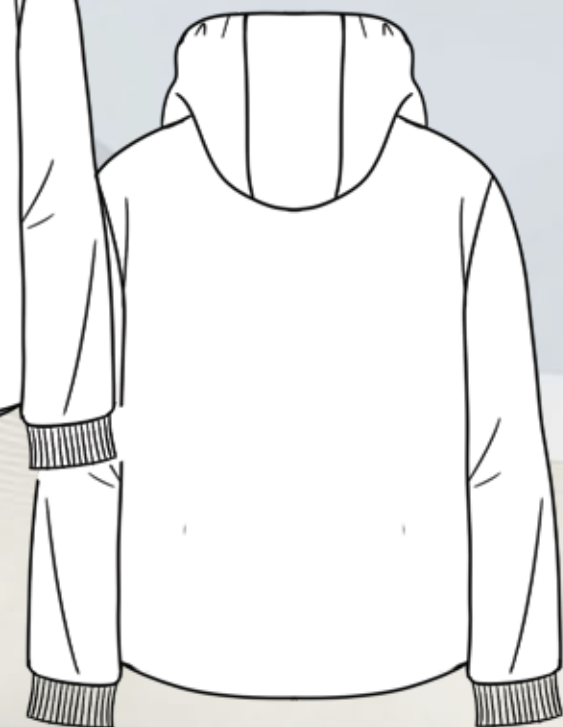
Poly
Knit



Stretch
Wool



Knit Terry
Shine

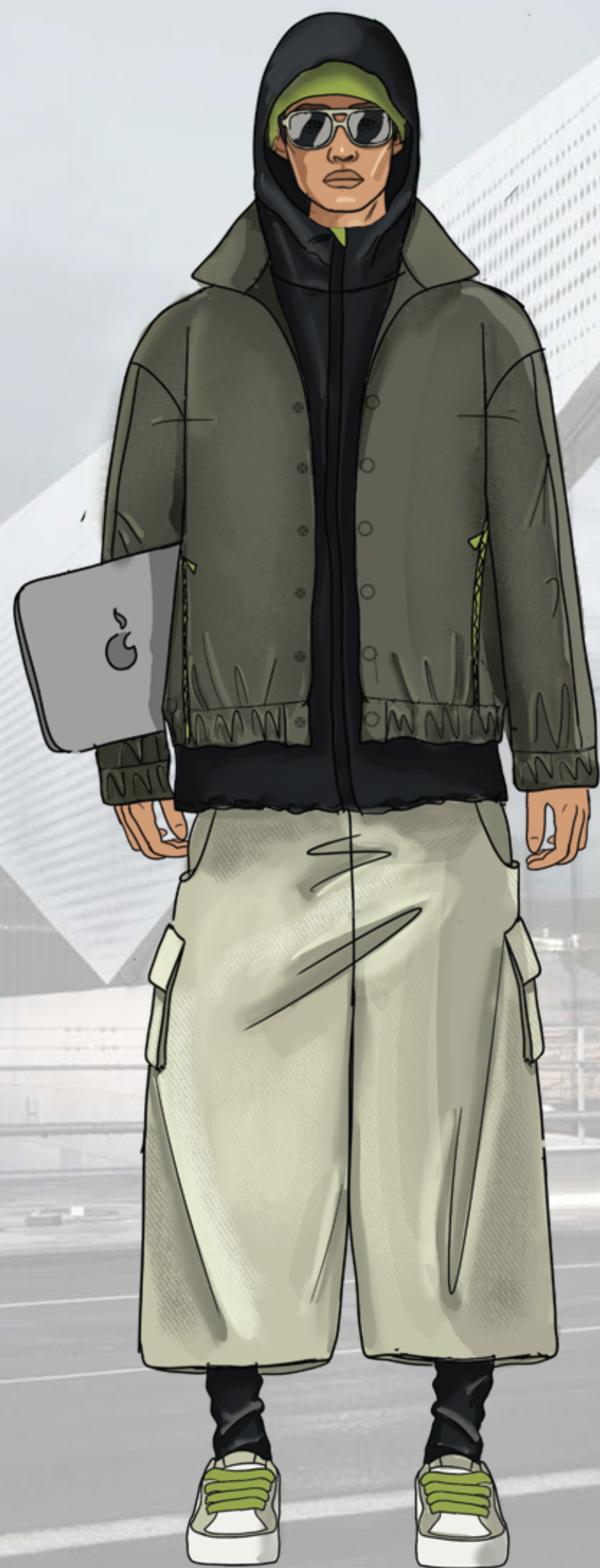


Sleeve opening

Side seam
pockets

Pintuck

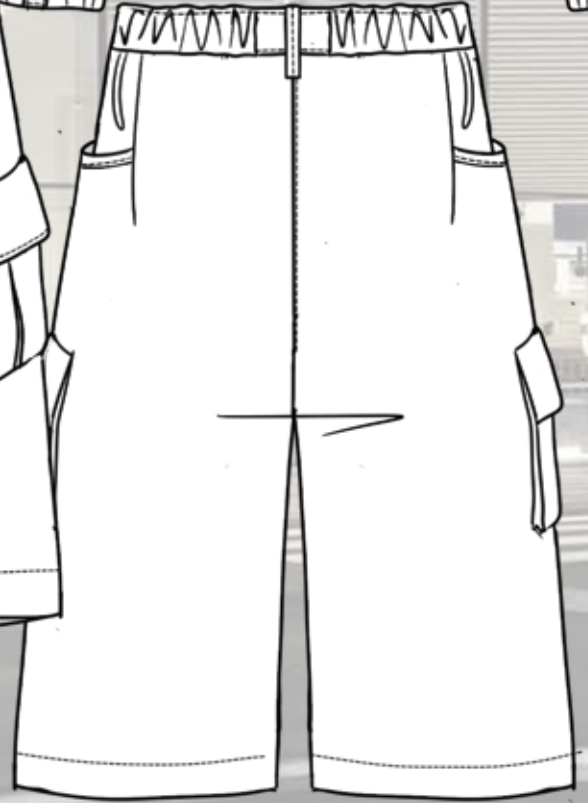
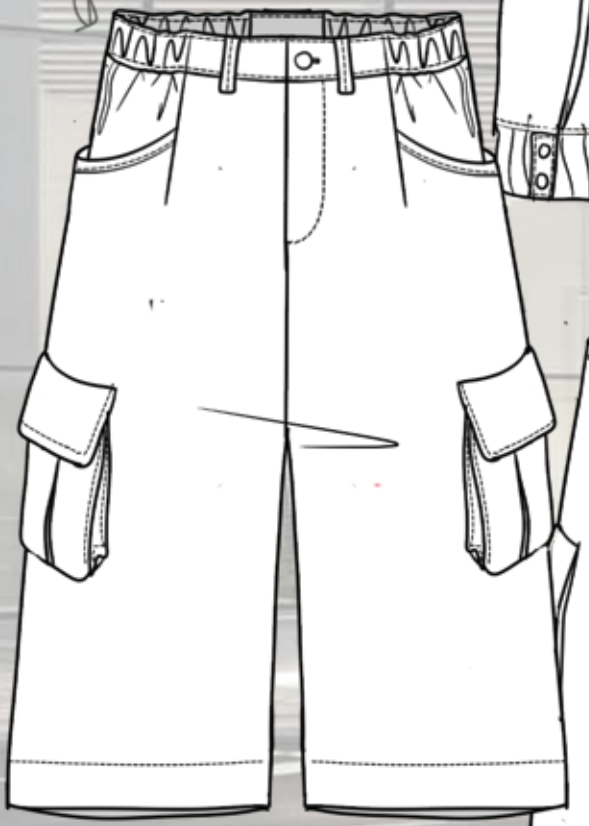
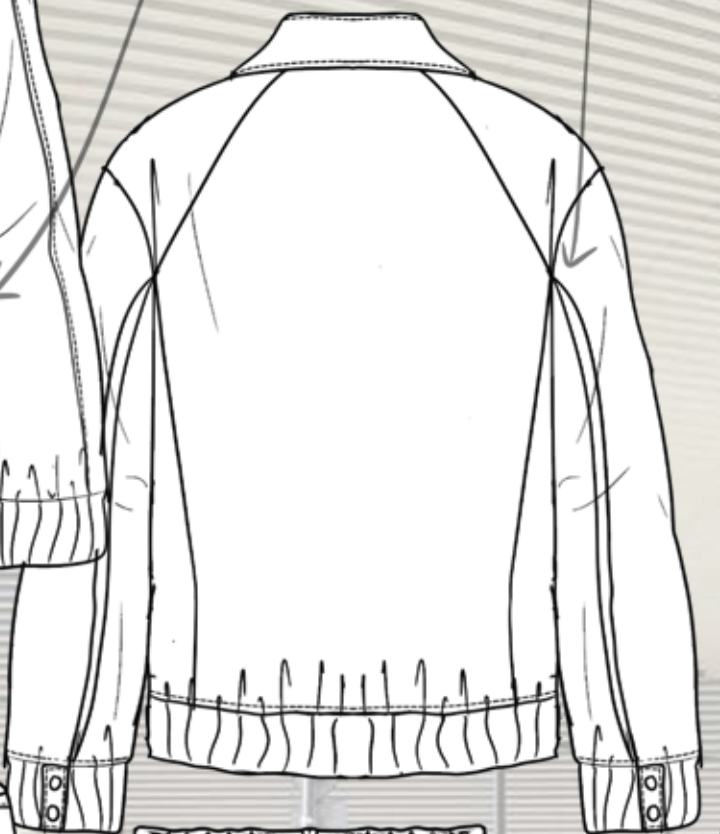




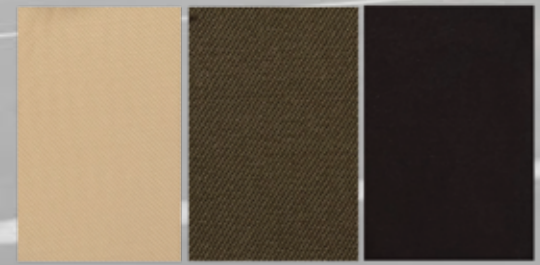
Zip with pocketed underlay

Pleated sleeves/back

Self-elasticated



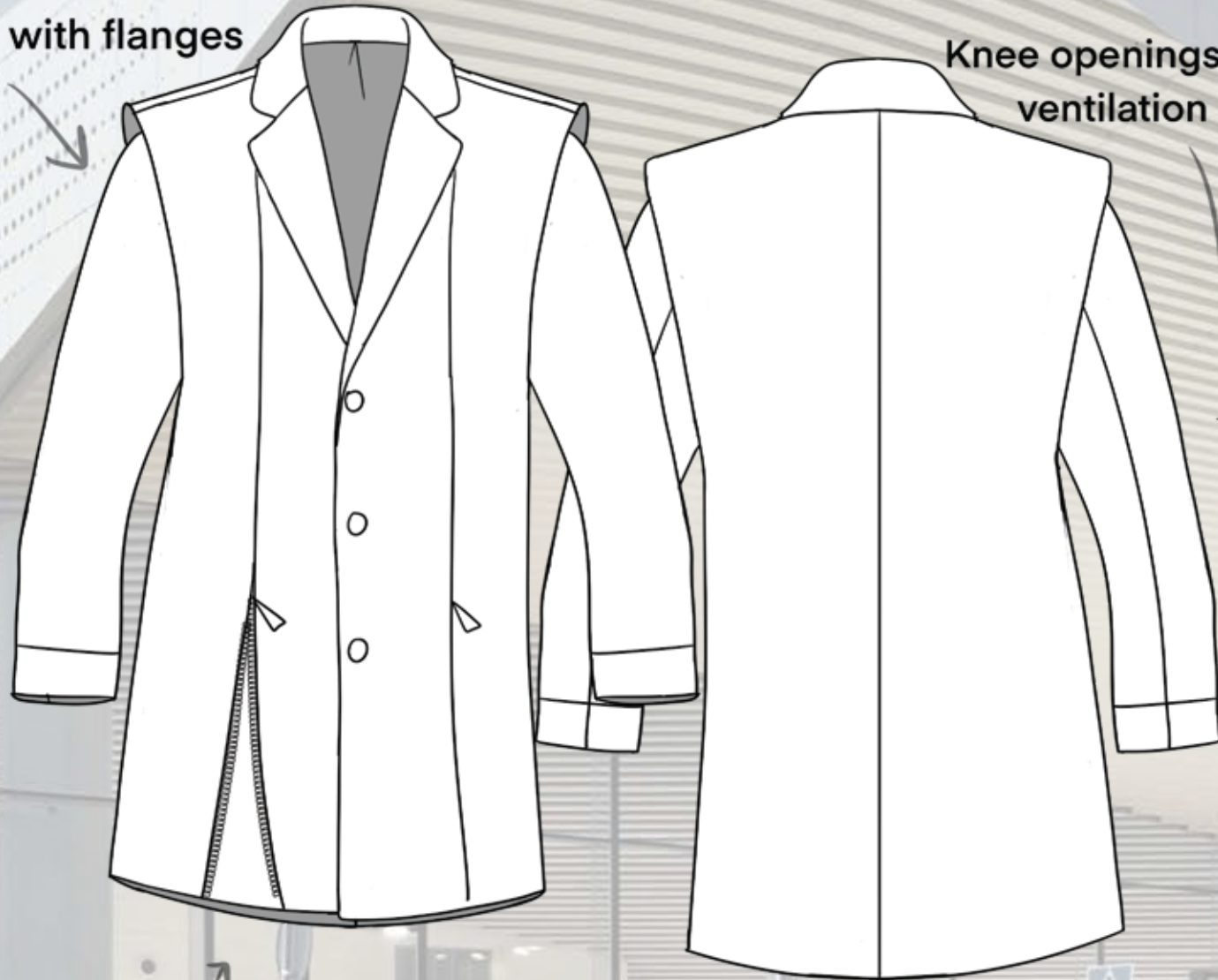
Back panel with mesh underlay



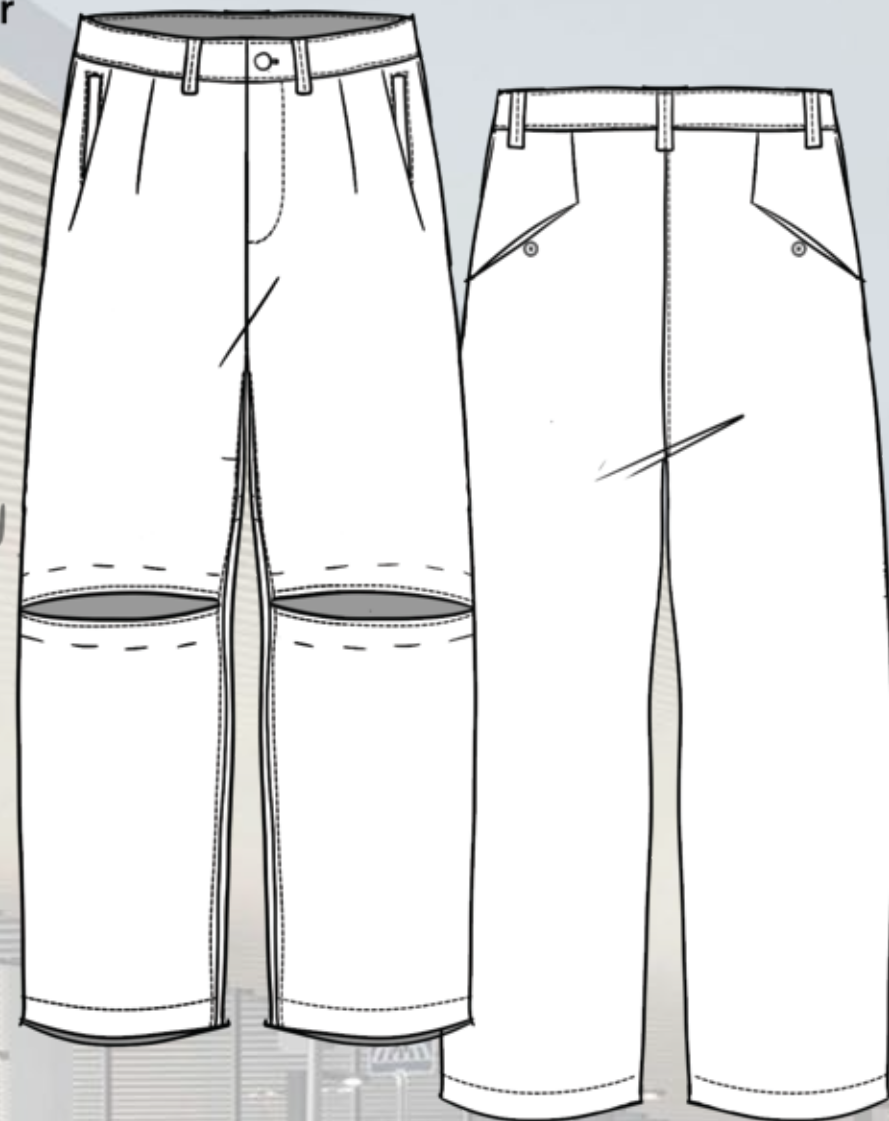
Poly Knit Wool Twill Recycled Nylon



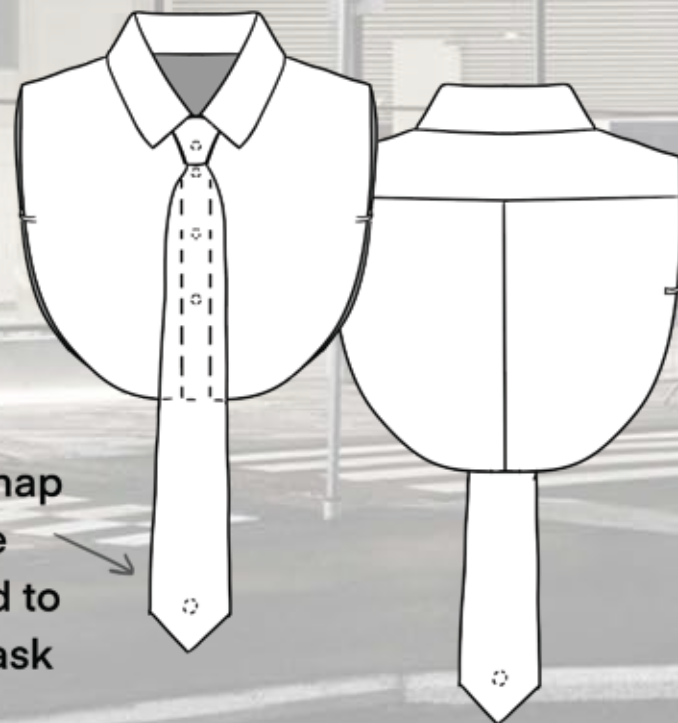
Inset sleeves with flanges



Knee openings for ventilation



Invisible separating zipper open vents to change jacket shape and fit



Padded nylon snap on tie, can be snapped around to make an eyemask



Stretch Wool



Wool Twill

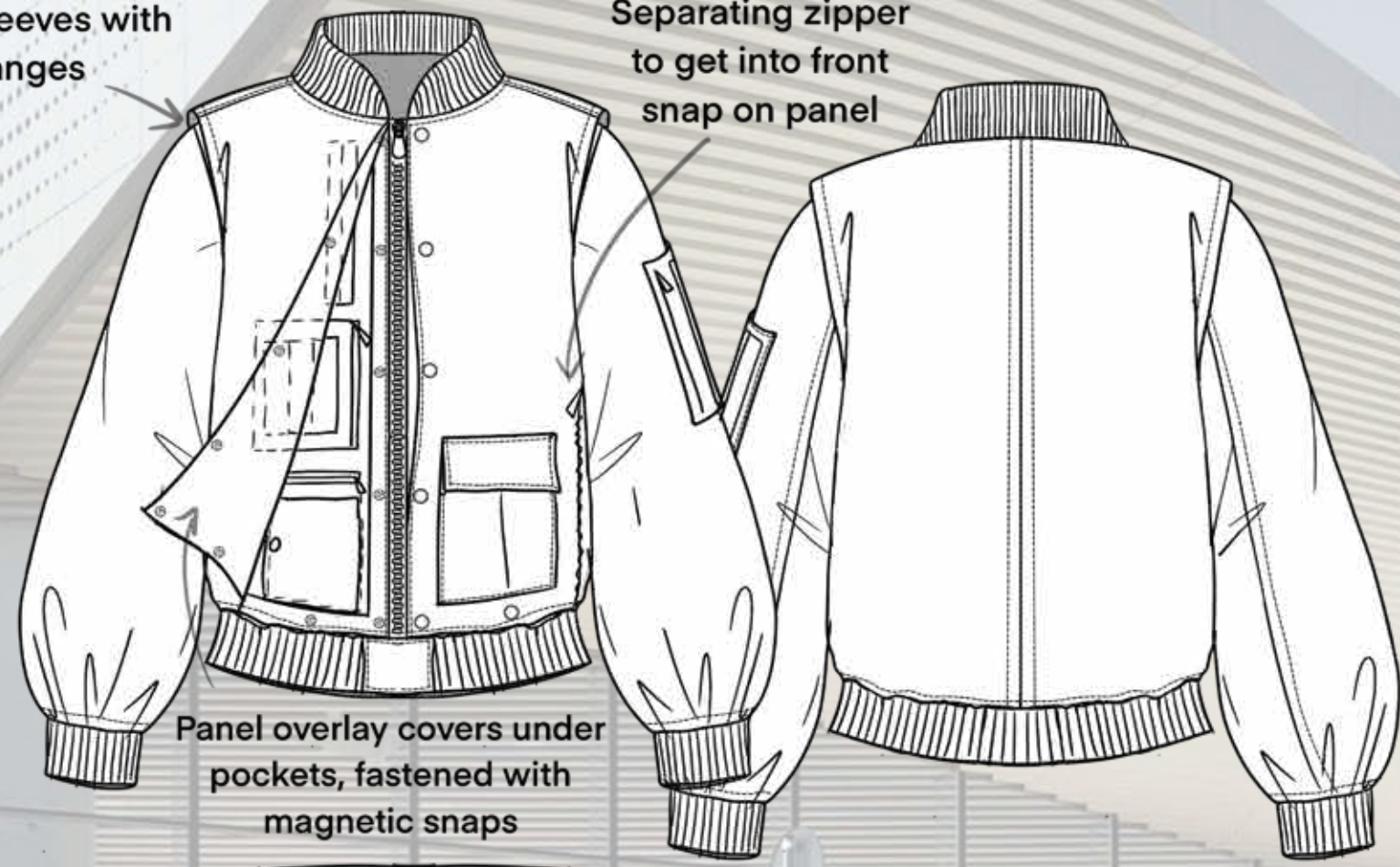


Knit Terry Shine

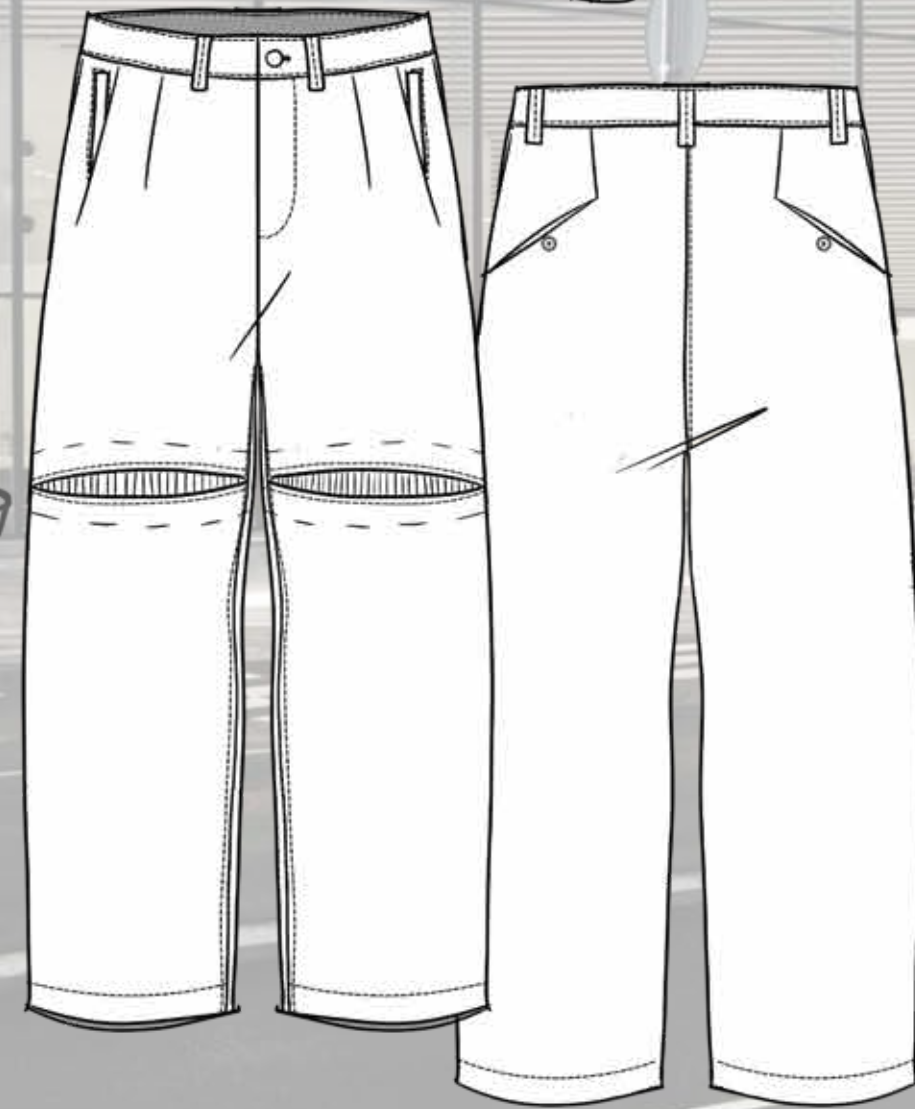


Inset sleeves with flanges

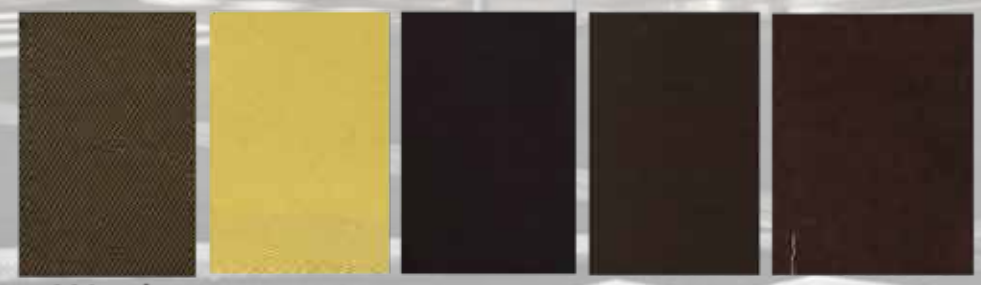
Separating zipper to get into front snap on panel



Panel overlay covers under pockets, fastened with magnetic snaps



Knit underlay



Wool Twill

Wool Twill

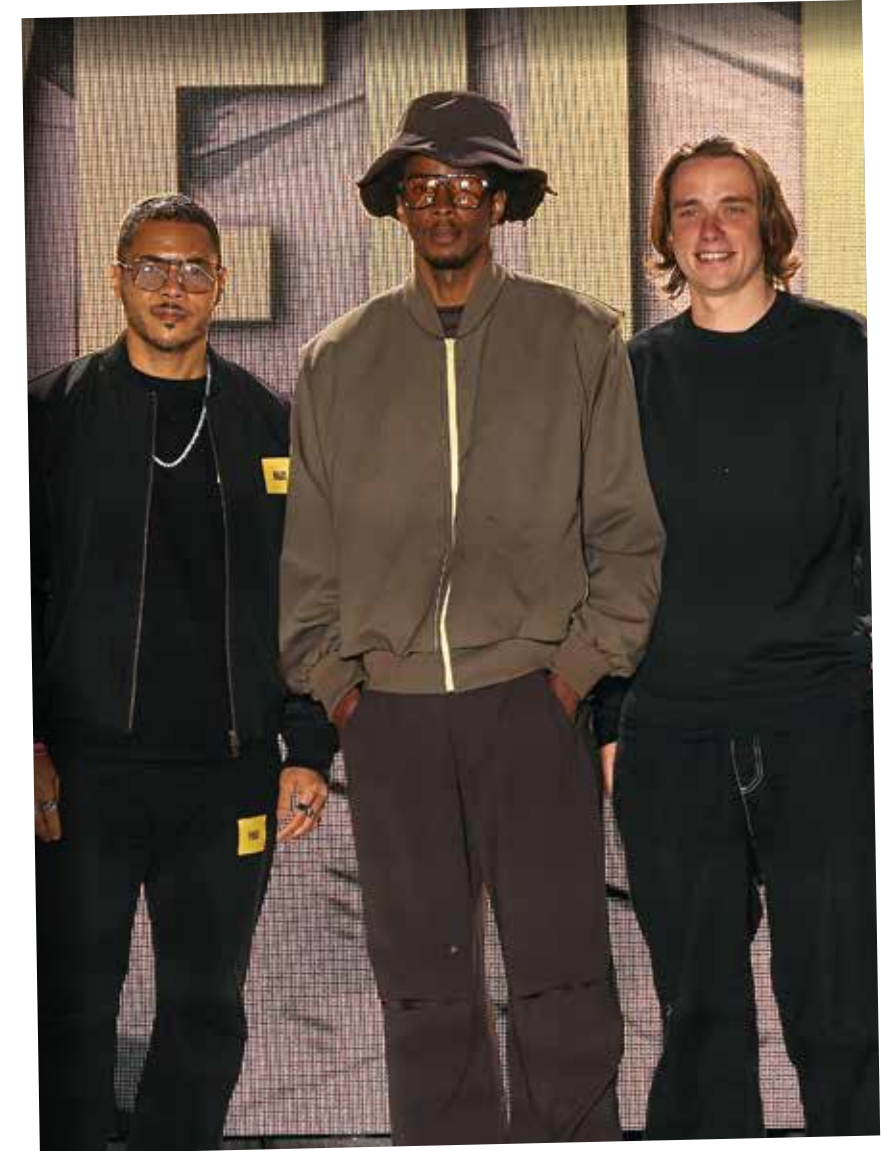
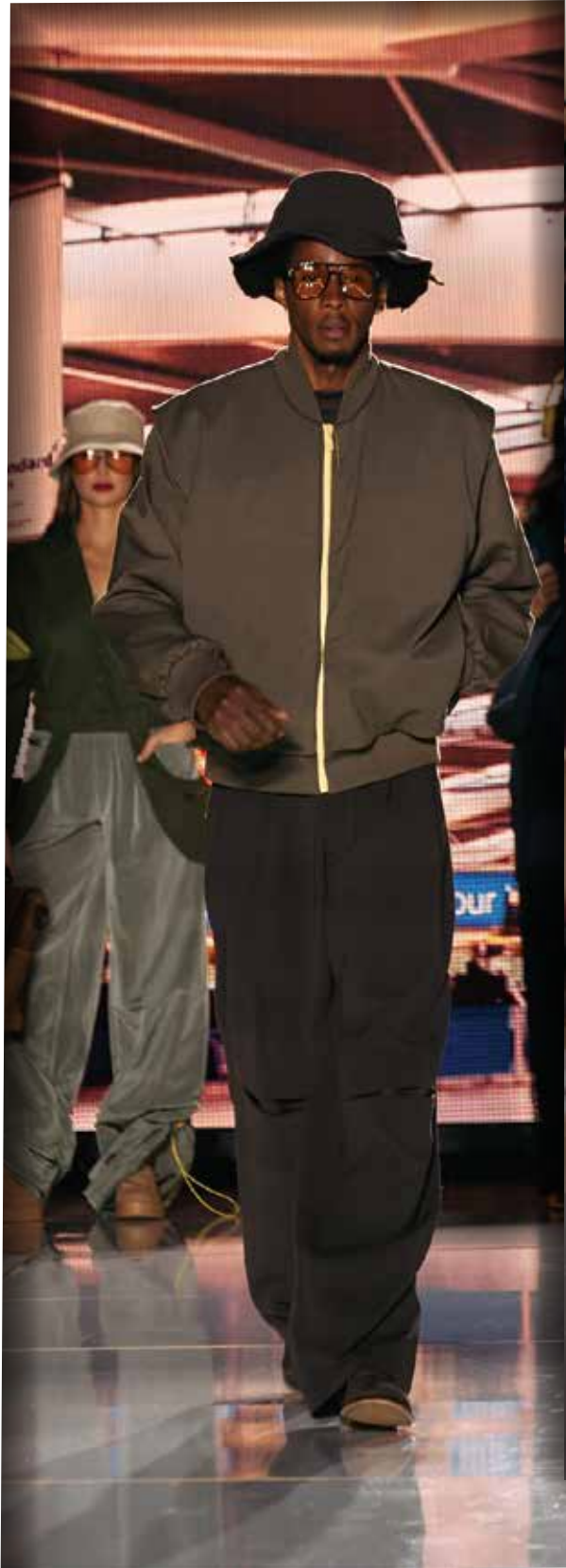
Nylon

Stretch Wool

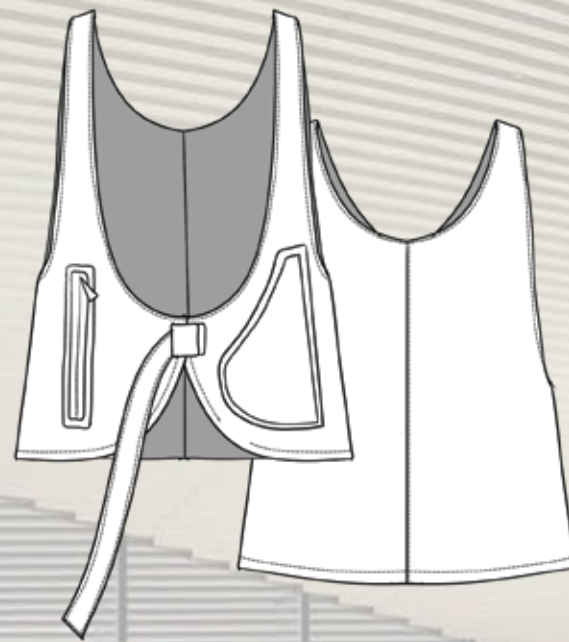
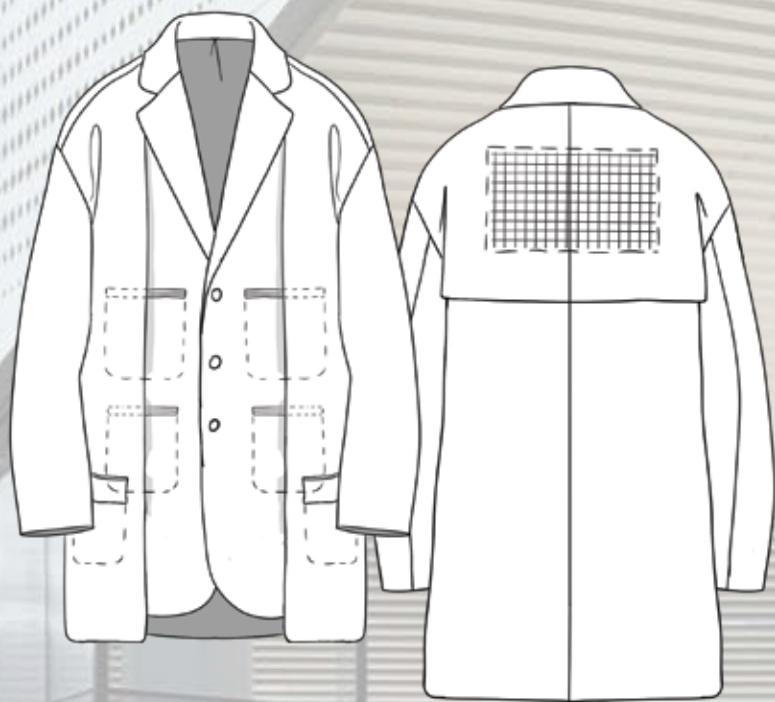
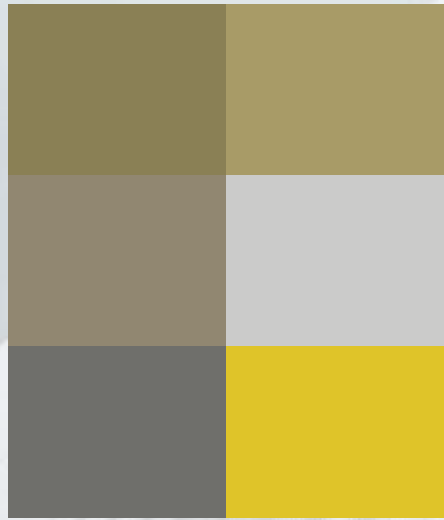
Rib Knit

Final Look

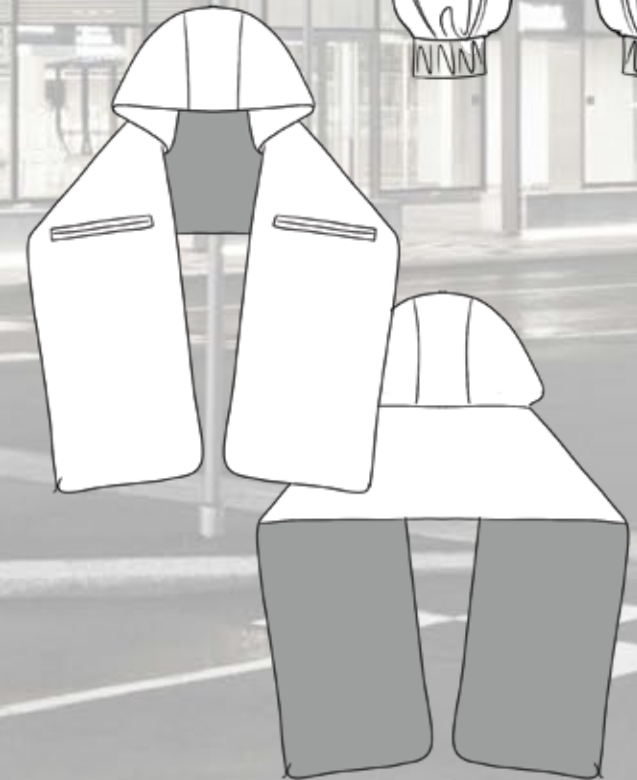
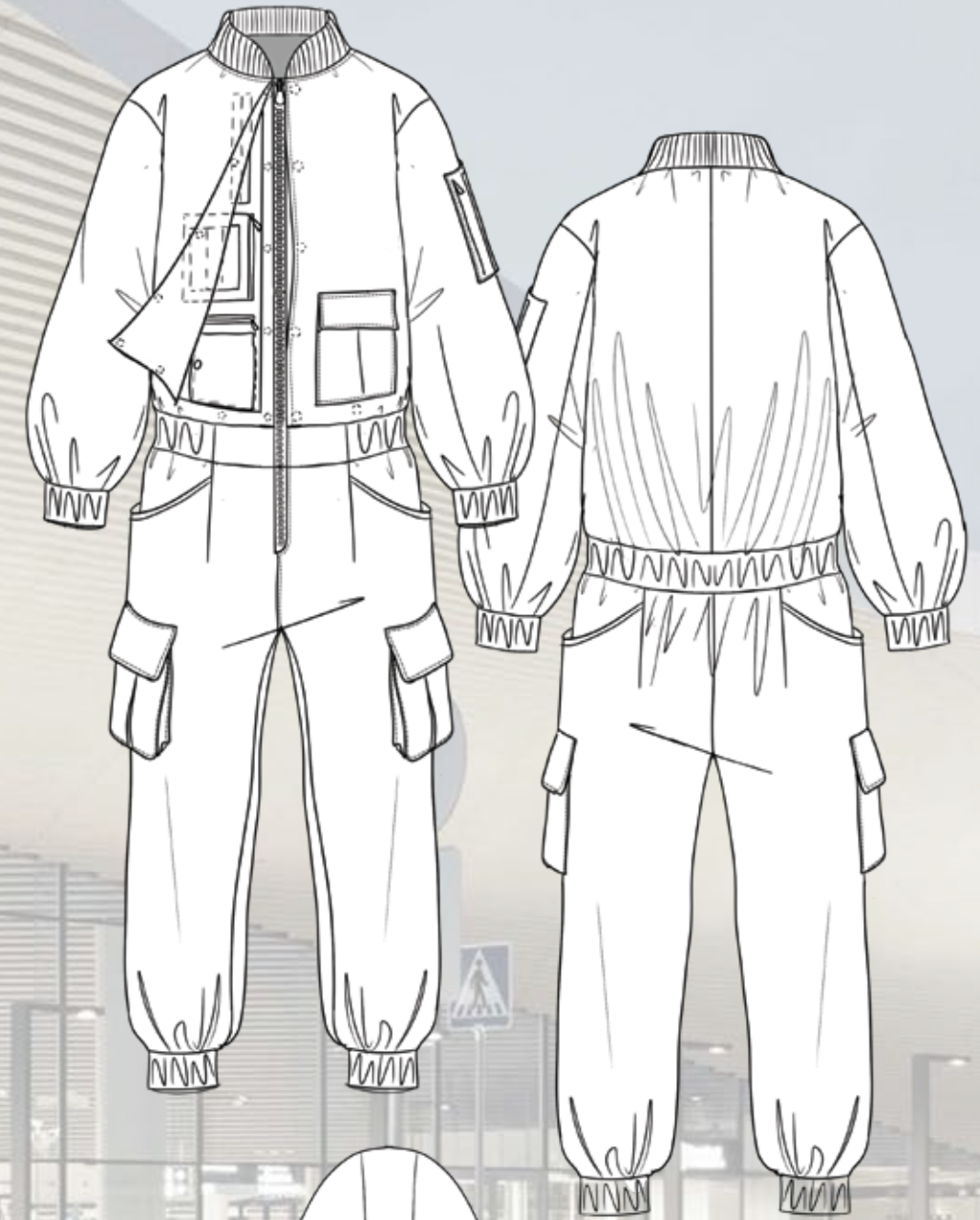
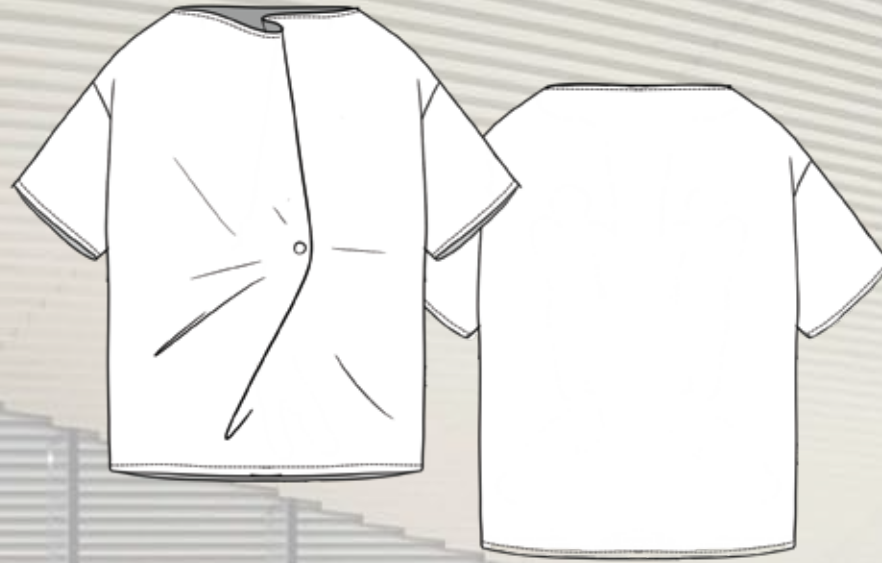
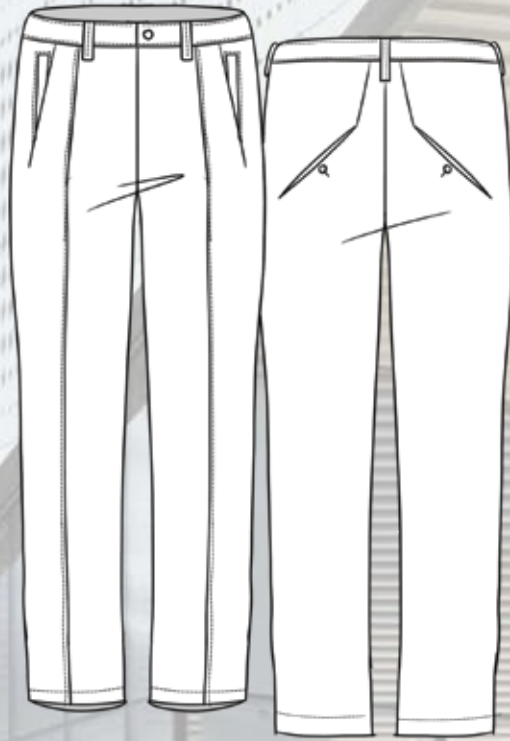
-Purchased by mentor
for production

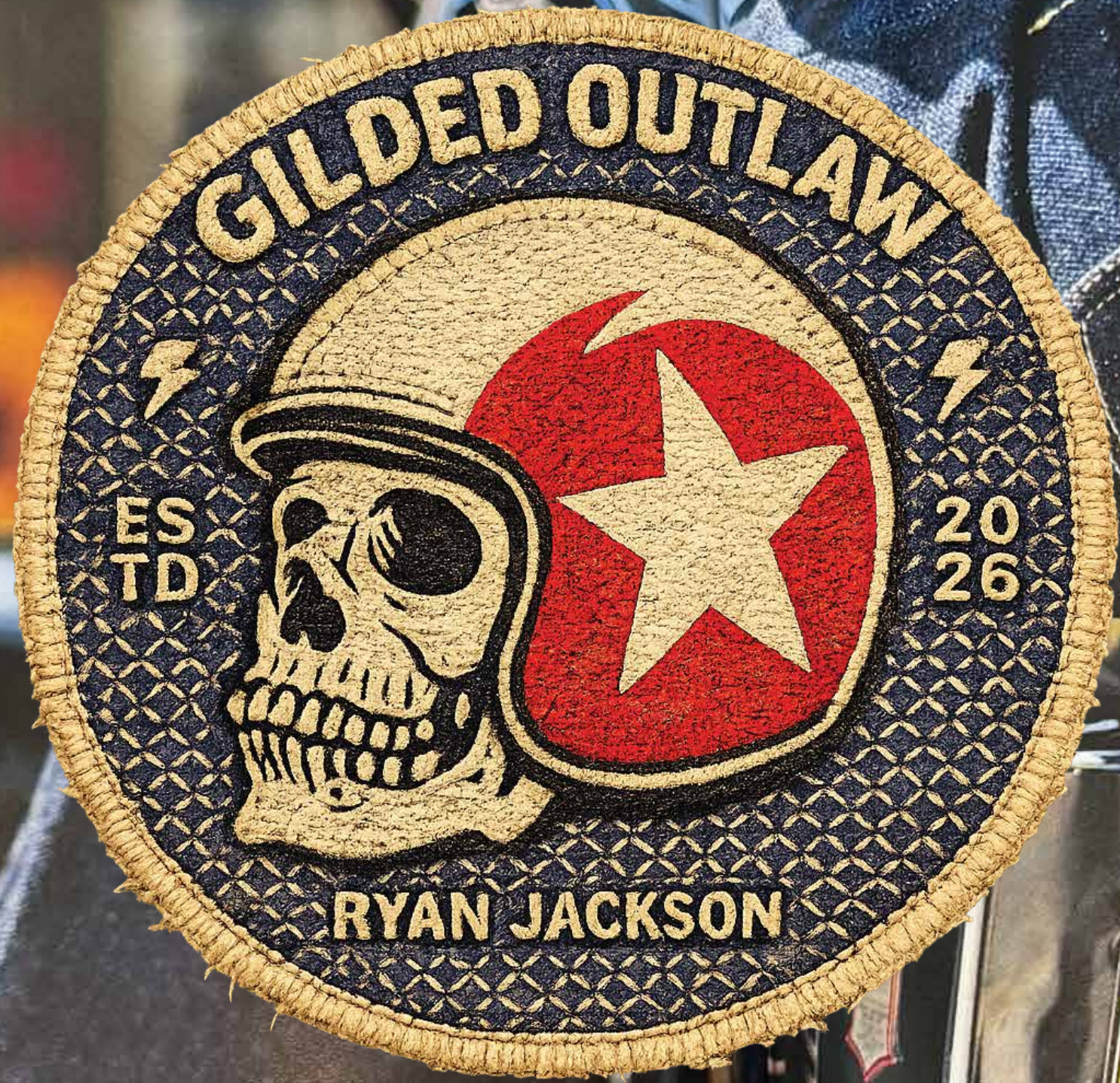


Alternate Group 1



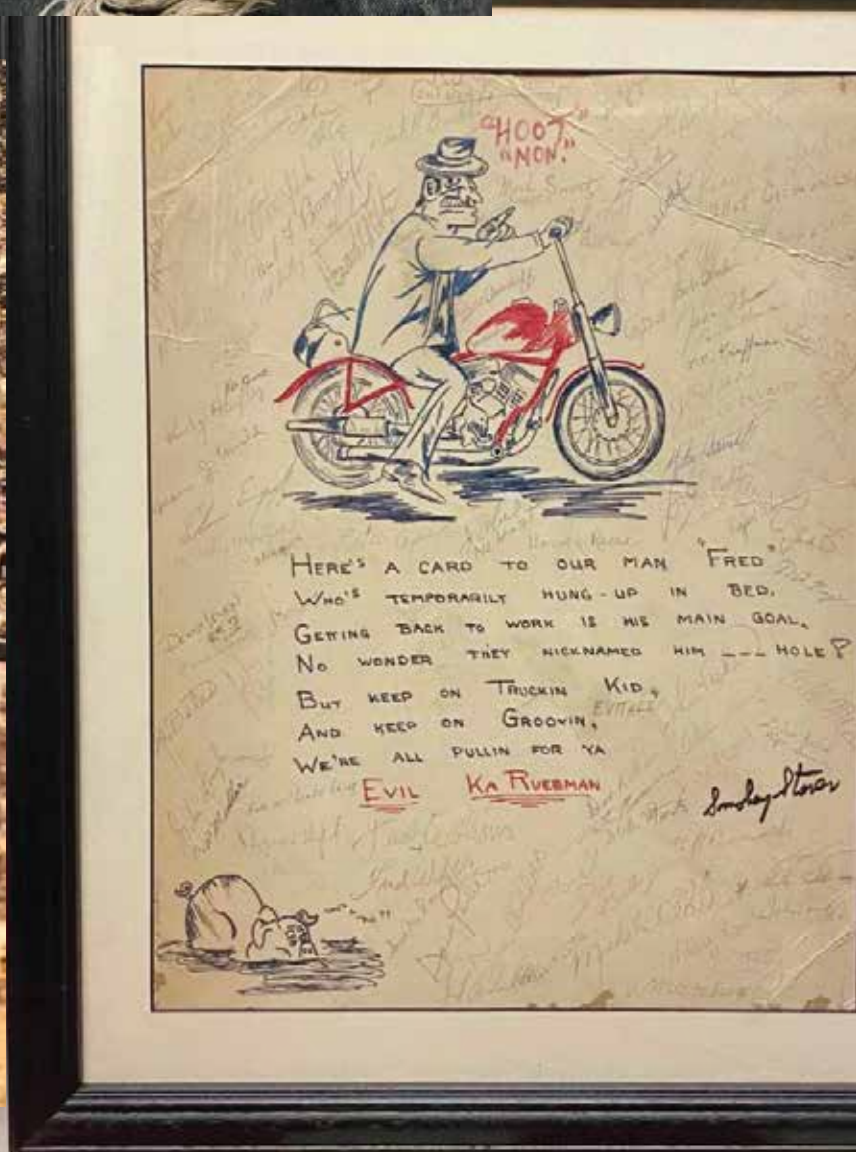
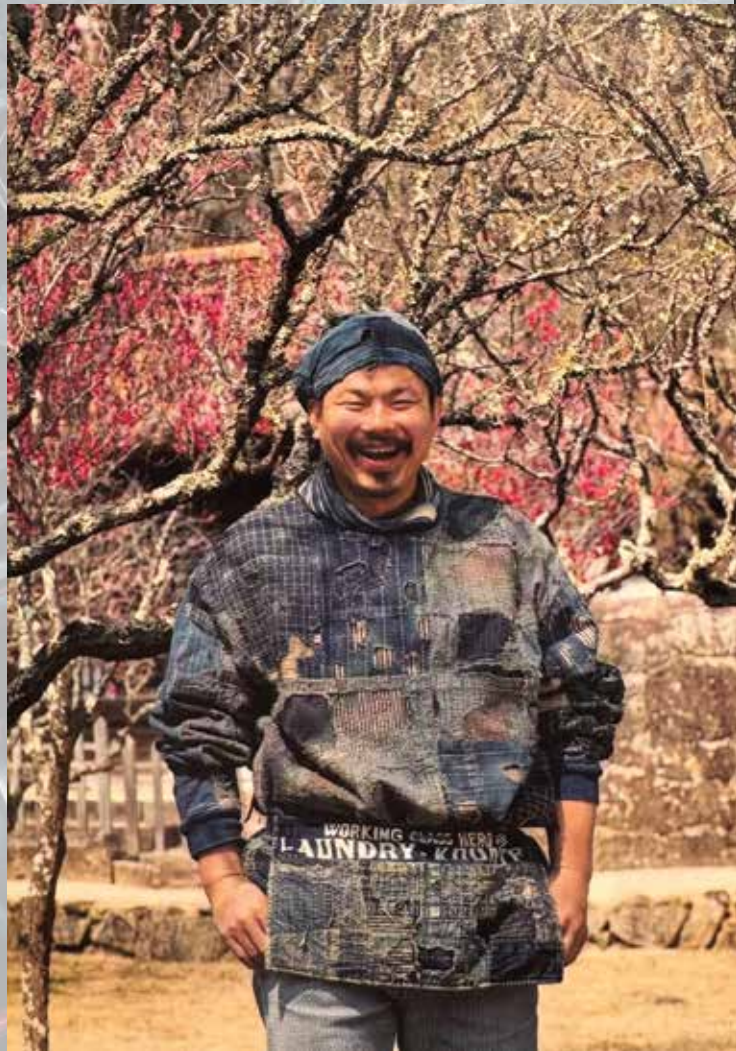
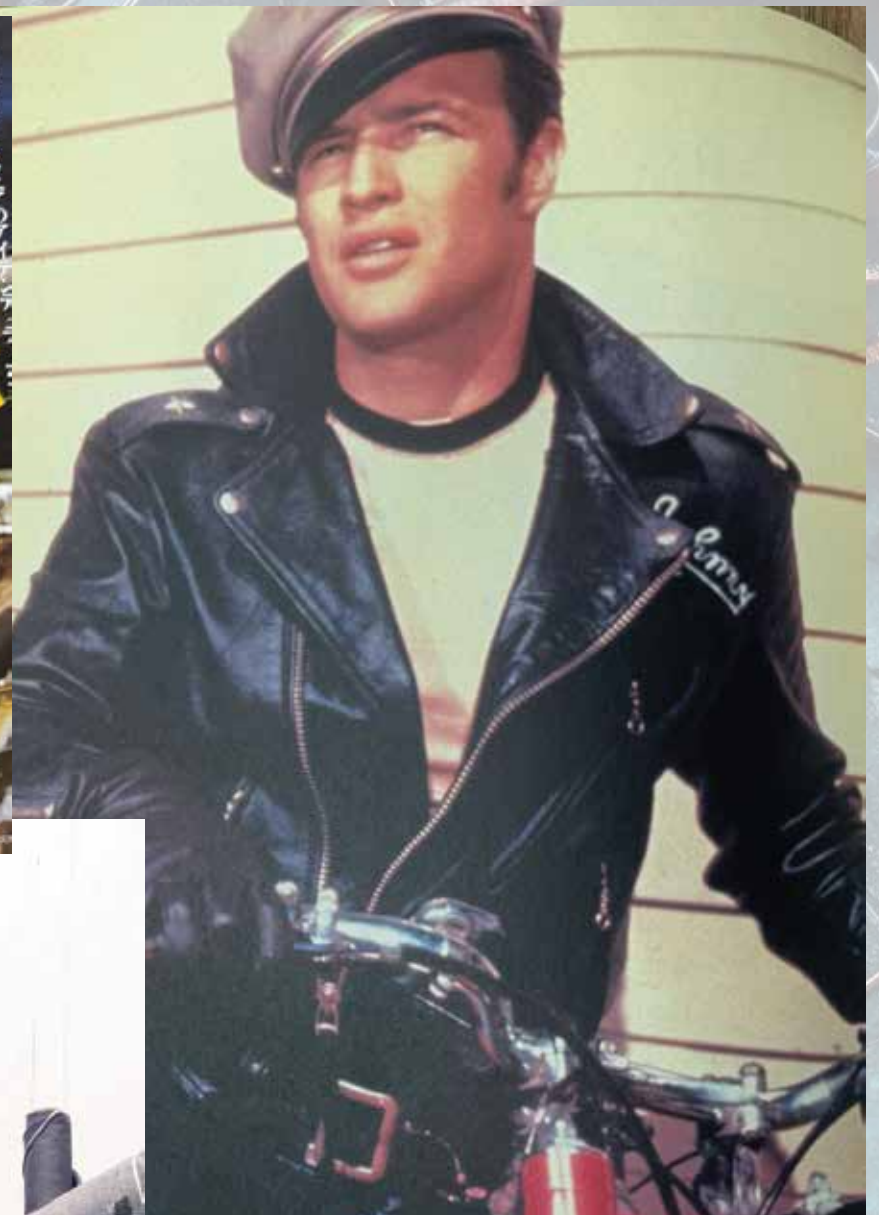
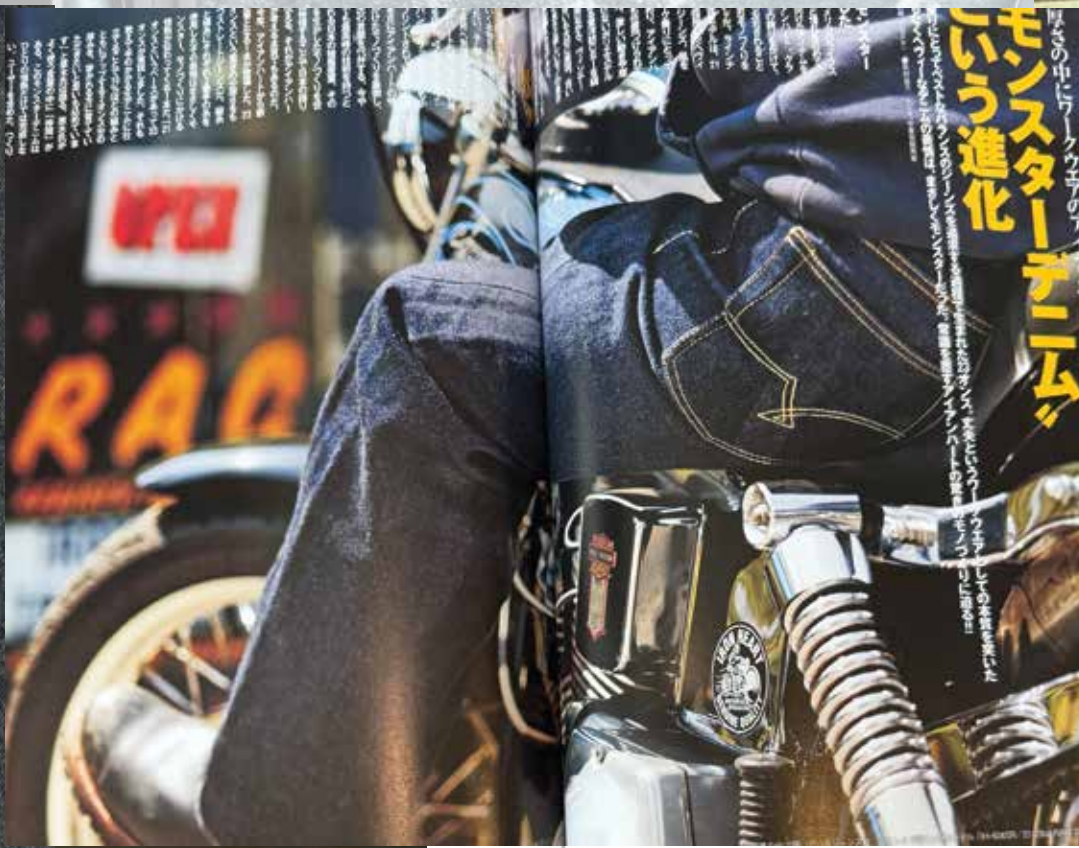
Alternate Group 2







BECK MODEL 666 RS/S JACKET
"MULHOLLAND"
50年代中期にレーシング用シャツジャケット
として活躍したモデル。価格19万9500円



• Blending vintage western “outsider” styling with eastern denim practices

• Cross culture functionality and durability.

• Road-worn textures reinforced with alternative practices

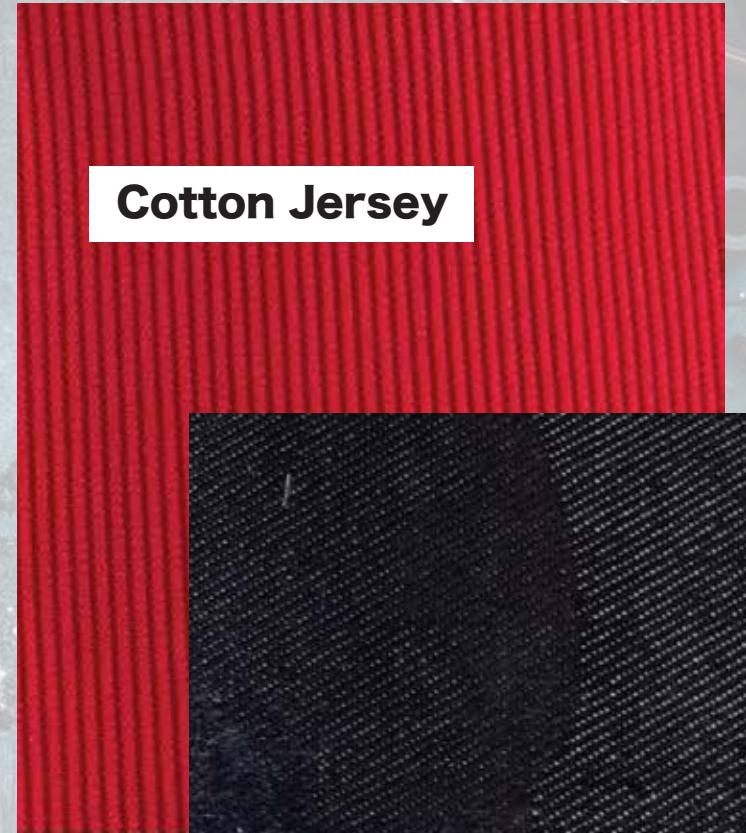
• Technical functionality



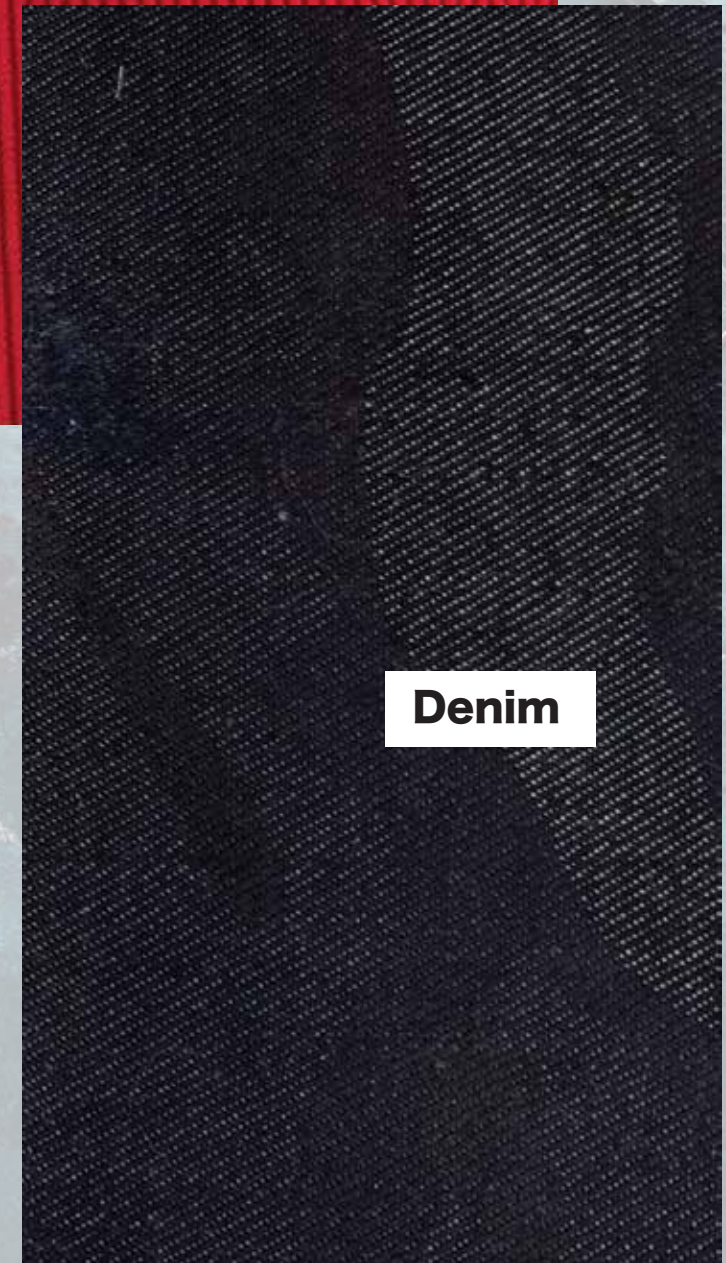
Sashiko Repair Stitch



Cotton Jersey



Denim



Distressed Leather

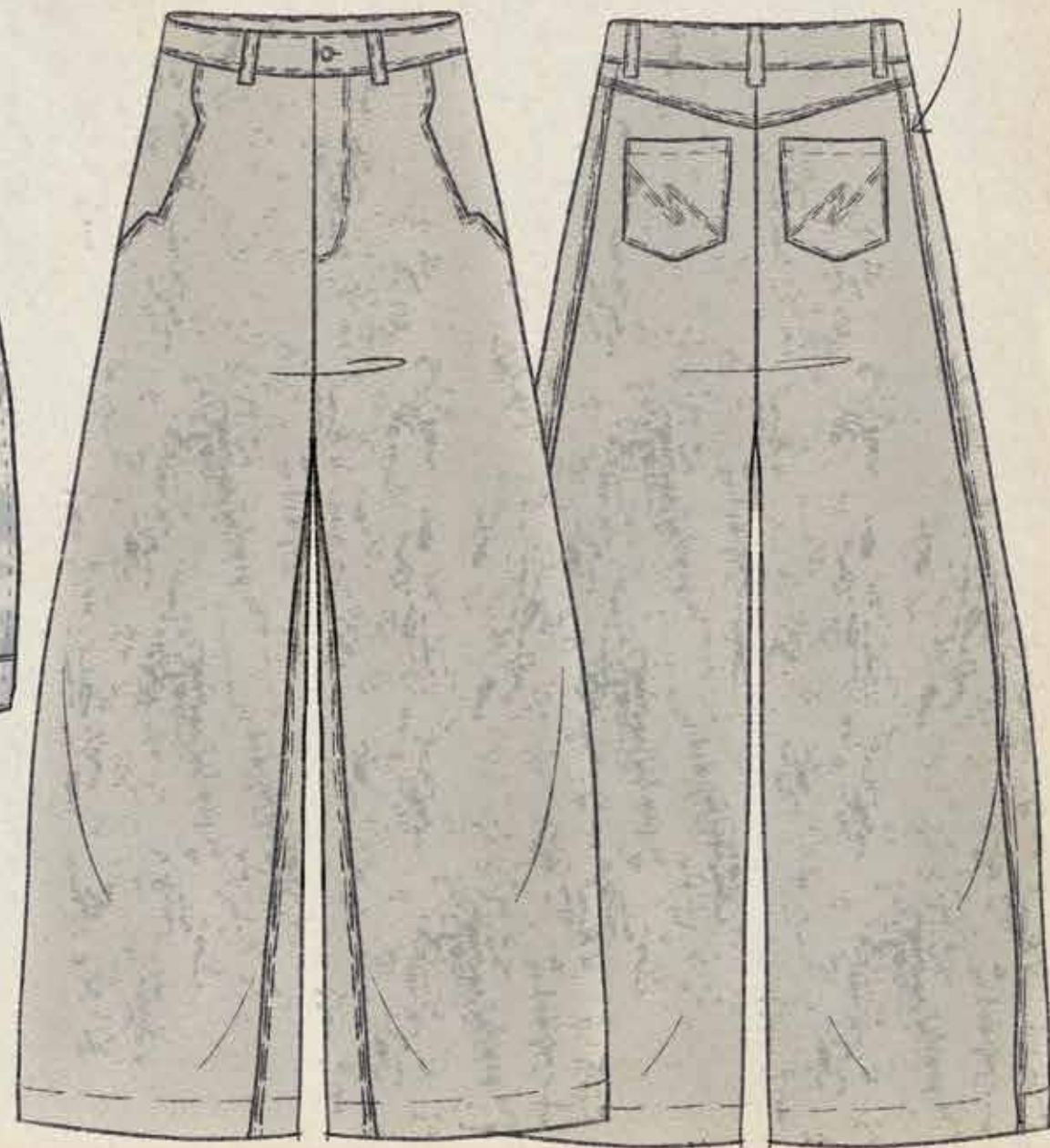
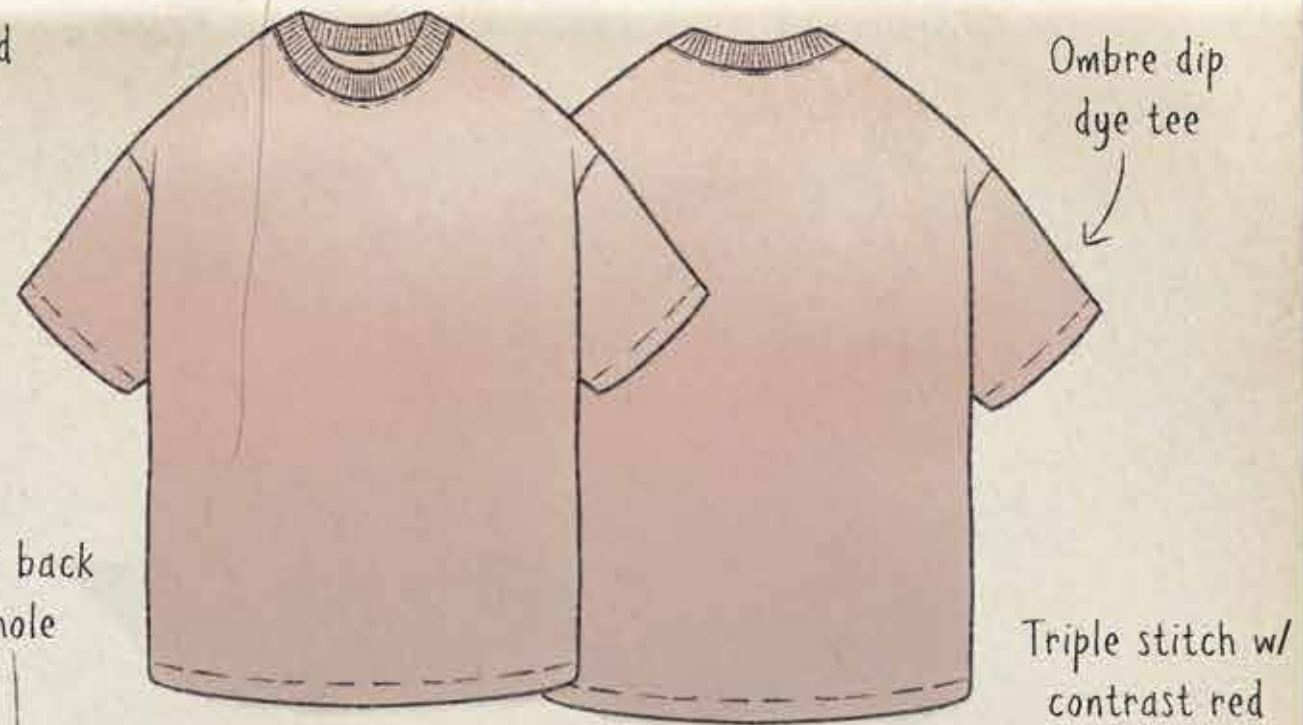


Denim Accordion Panel



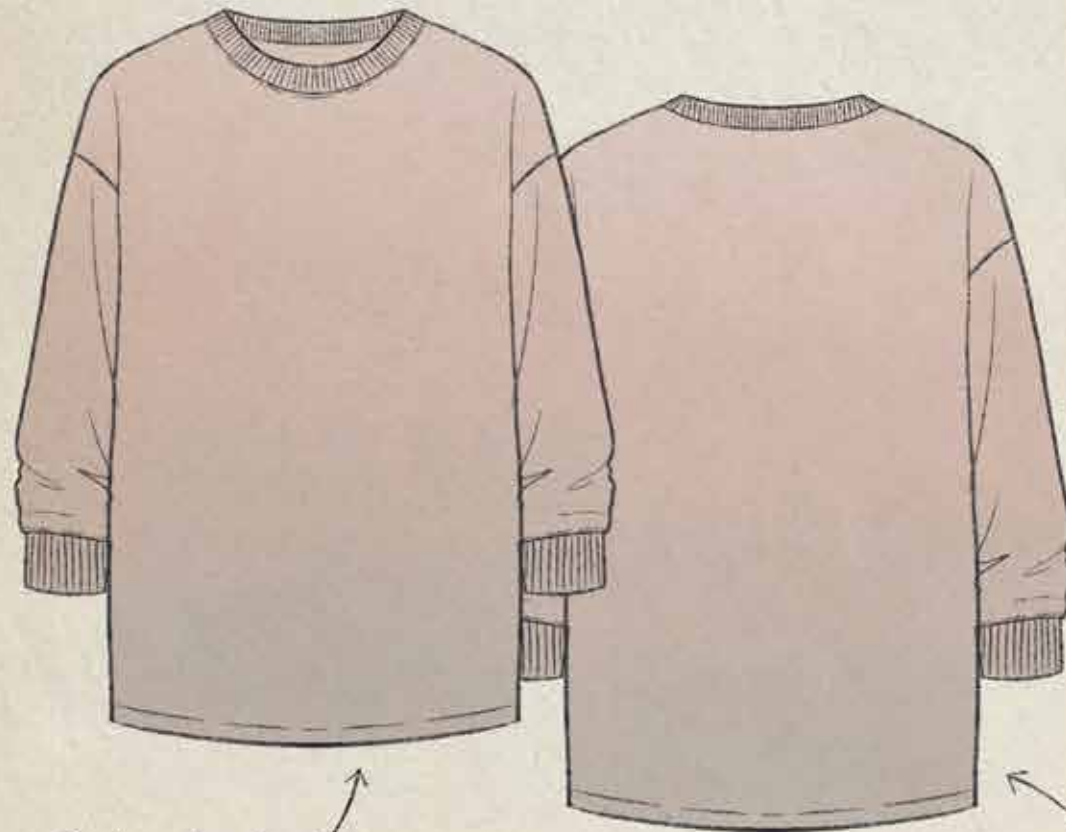
Miniature pleats sewn onto stretch fabric, allows non-stretch denim to move flexibly at different flex points on the body.





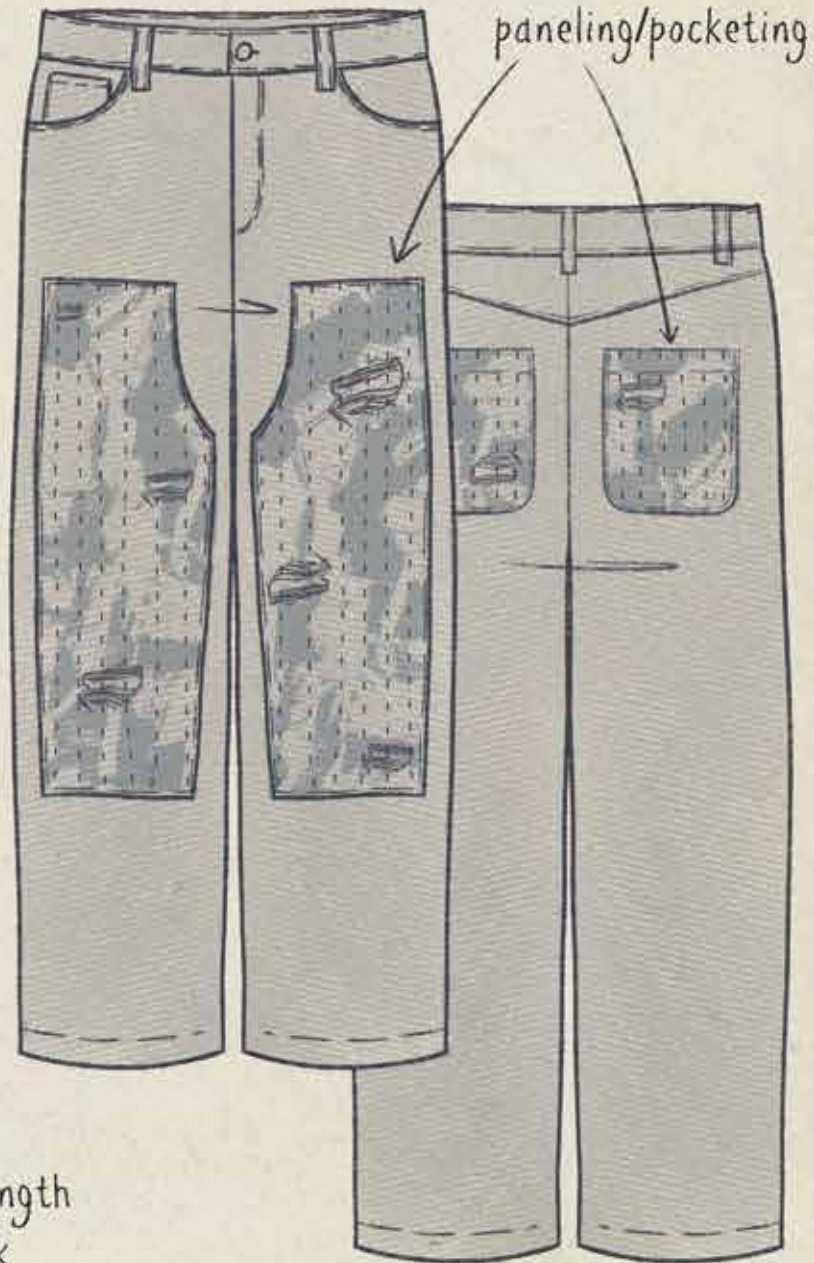


Stretch accordion pleat sample



Ombre dip dye

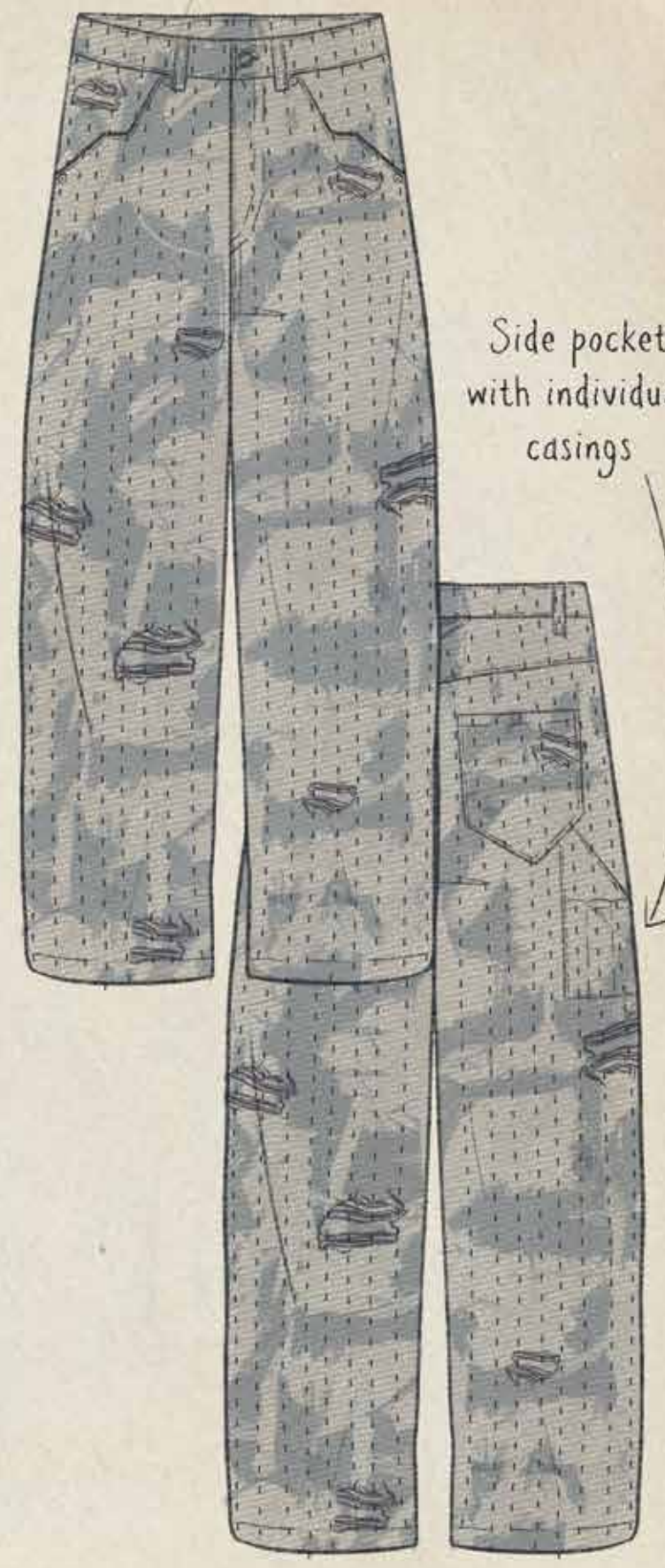
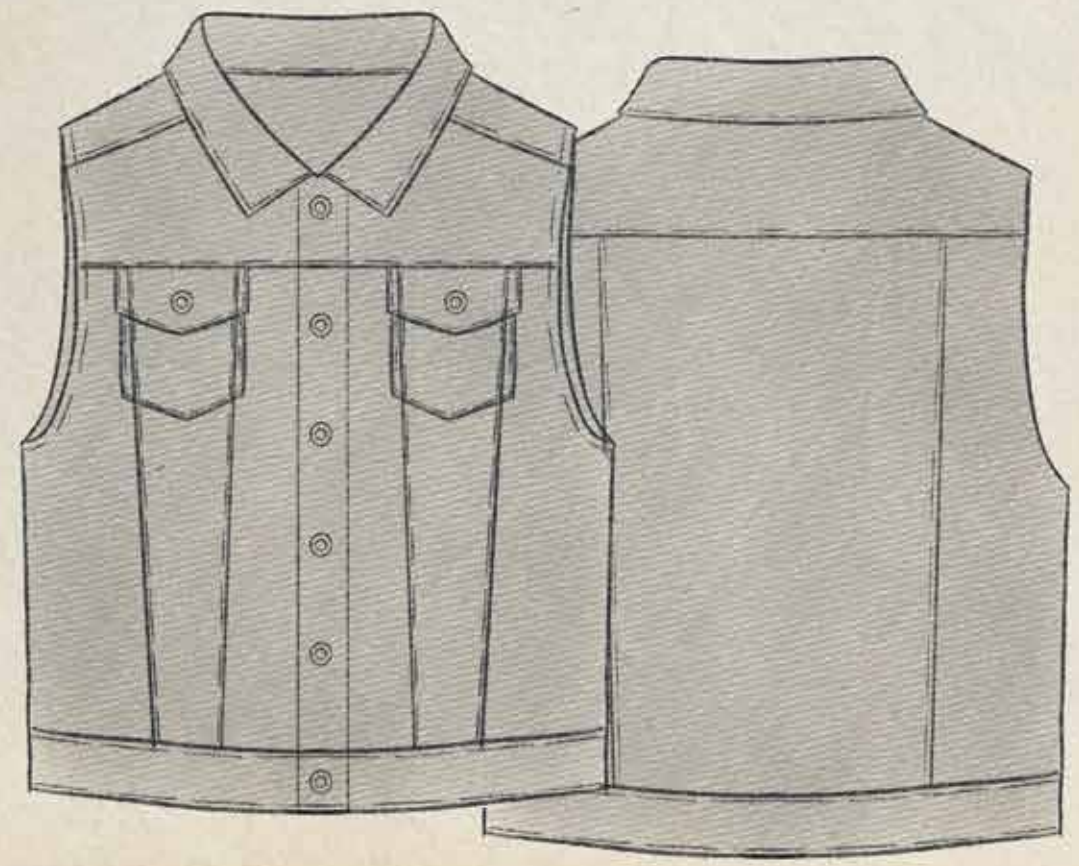
Extended length crewneck



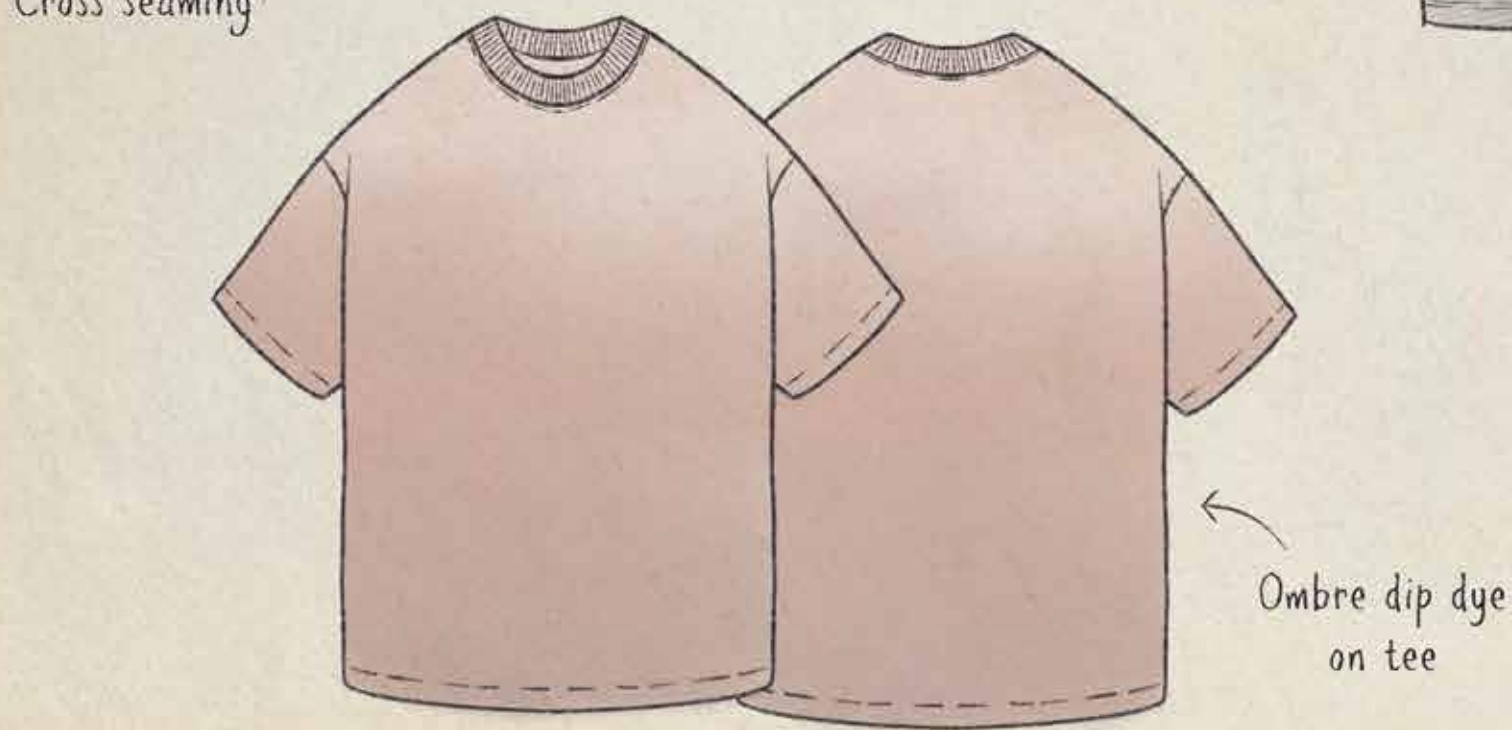
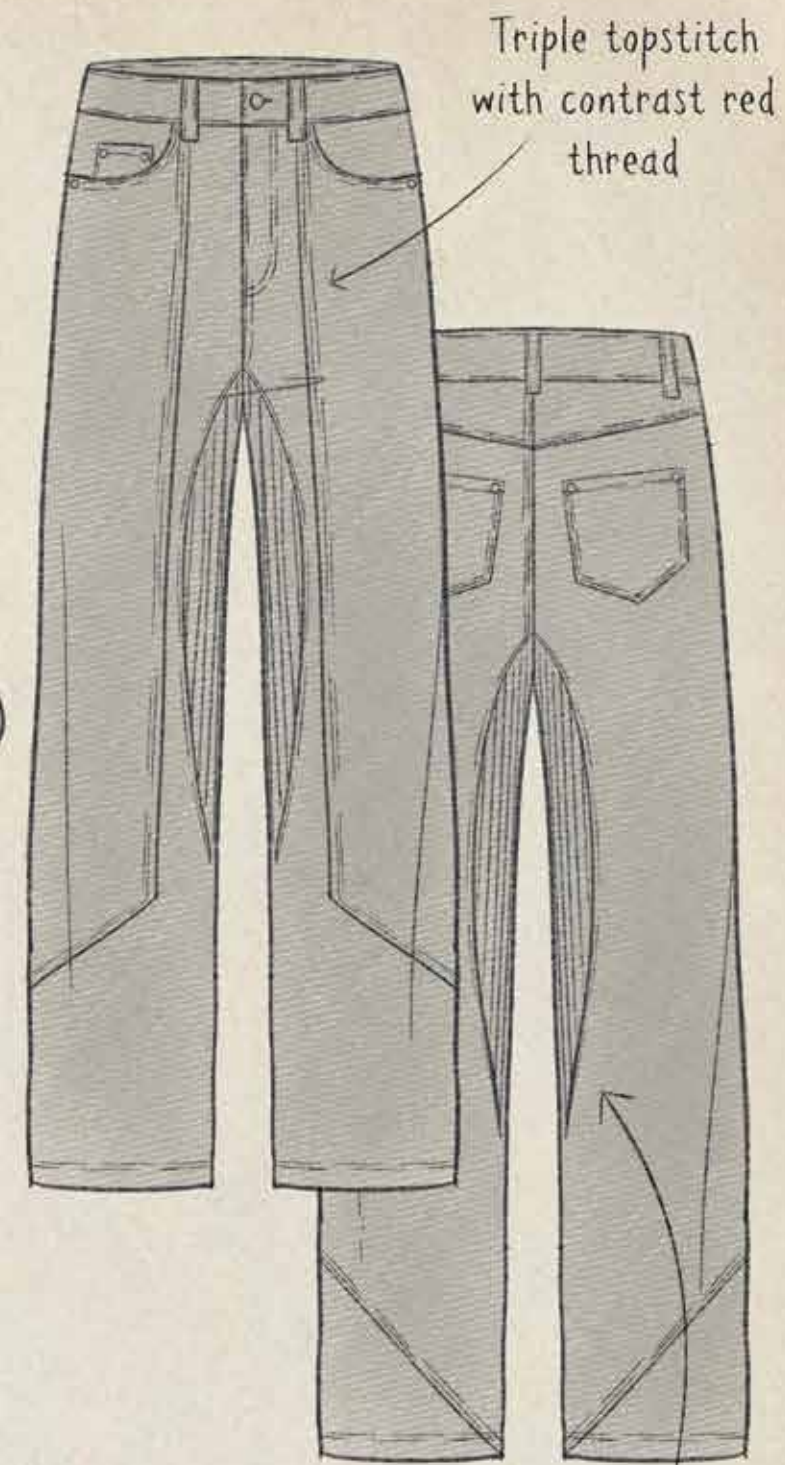
Contrast sashiko paneling/pocketing



Stretch accordion pleat detail at sides



Side pocket with individual casings





Contrast denim stripe



Stretch accordion pleating detail at sides



Partially elasticated waistband

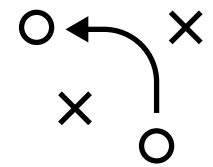
Bottom zips for comfortable entry

A black and white photograph of a soccer match. The image is blurred, showing the lower legs and feet of players on a grass field. A player in the foreground is wearing white socks and white cleats. Another player is visible to the left, wearing a white jersey and dark shorts. The text "Matchday Atelier" is overlaid in the center in a white, sans-serif font.

Matchday Atelier



Customer Profile



Age:

- Between 25-40

Profession:

- Sports agent/representative for footballers

Location:

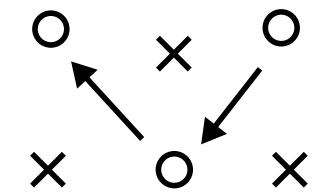
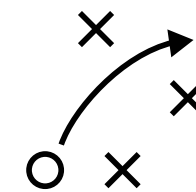
- Always travelling/on the move. Primary points of travel include large cities throughout Europe, Latin America, and the United States

Lifestyle Needs:

- Interacts with both players and managers/executives at large clubs. His wardrobe must reflect the sensibilities of both of these groups.

Fashion Sensibilities:

- Values versatility while maintaining a professional aesthetic. Must look at home both on the pitch and in the boardroom.



Moodboard



Fabrics



Structural Details

1

Adjustable collar



Pleat secured by patch

3



Hooded lapel, sewn in place of traditional collar



2



Zig Zag stitch from goalkeeper glove reference

4

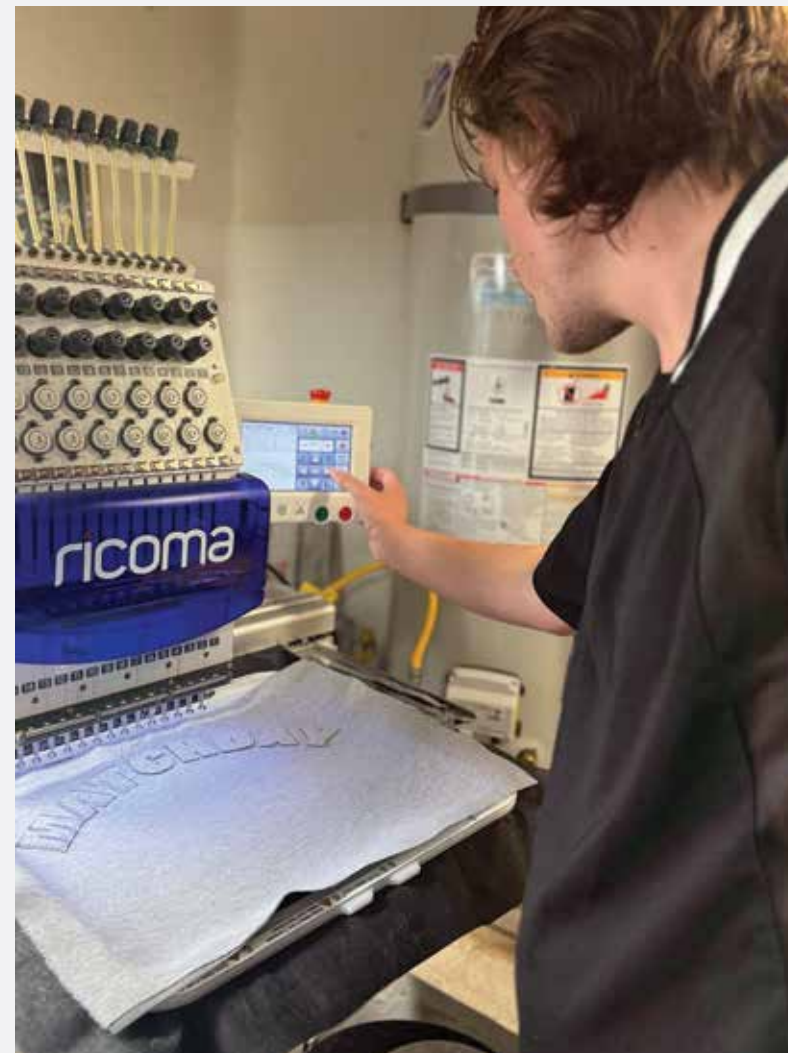
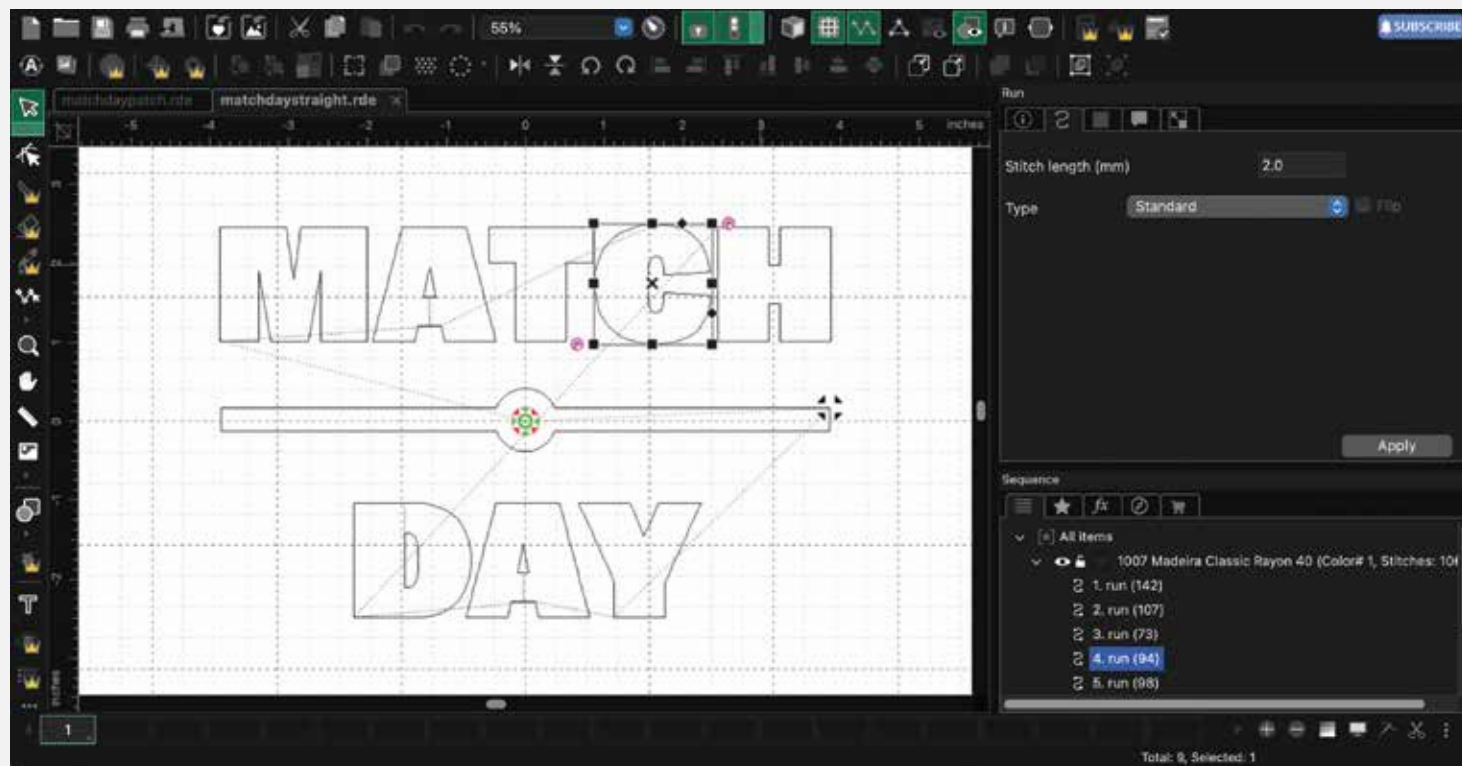
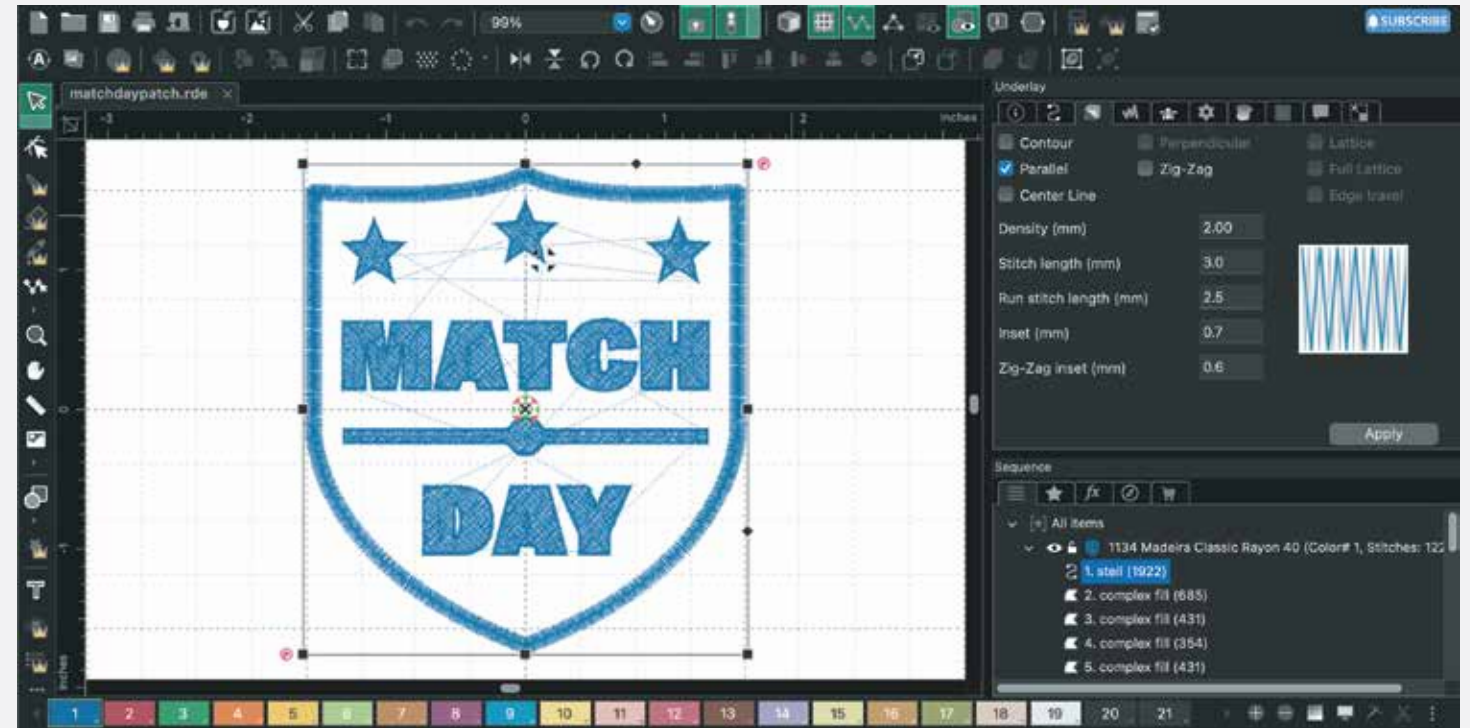
Striped rib collar design, pulled from vintage football jersey reference

Apply branding hit on neck piece



Branding Exploration - Embroidery

During my time at Otis I had a side gig doing embroidery for a small brand based in Ventura, CA. I would design various graphics and digitize them using a software called Chroma. I learned to map out stitch patterns and use different stitches to create different effects. Once I had digitized the graphic I upload it into the brand's industrial embroidery machine to test the file out before applying to a finished garment. The samples I created for this project include a quilted logo straight stitch, contrast fabric applique lettering, and a branded patch.



Rib contrast fabric applique



Mesh contrast fabric applique



Quilted logo single needle embroidery



Branded badge, applique wool patch



Branding Exploration - Quiet Luxury

Wool with leather strap

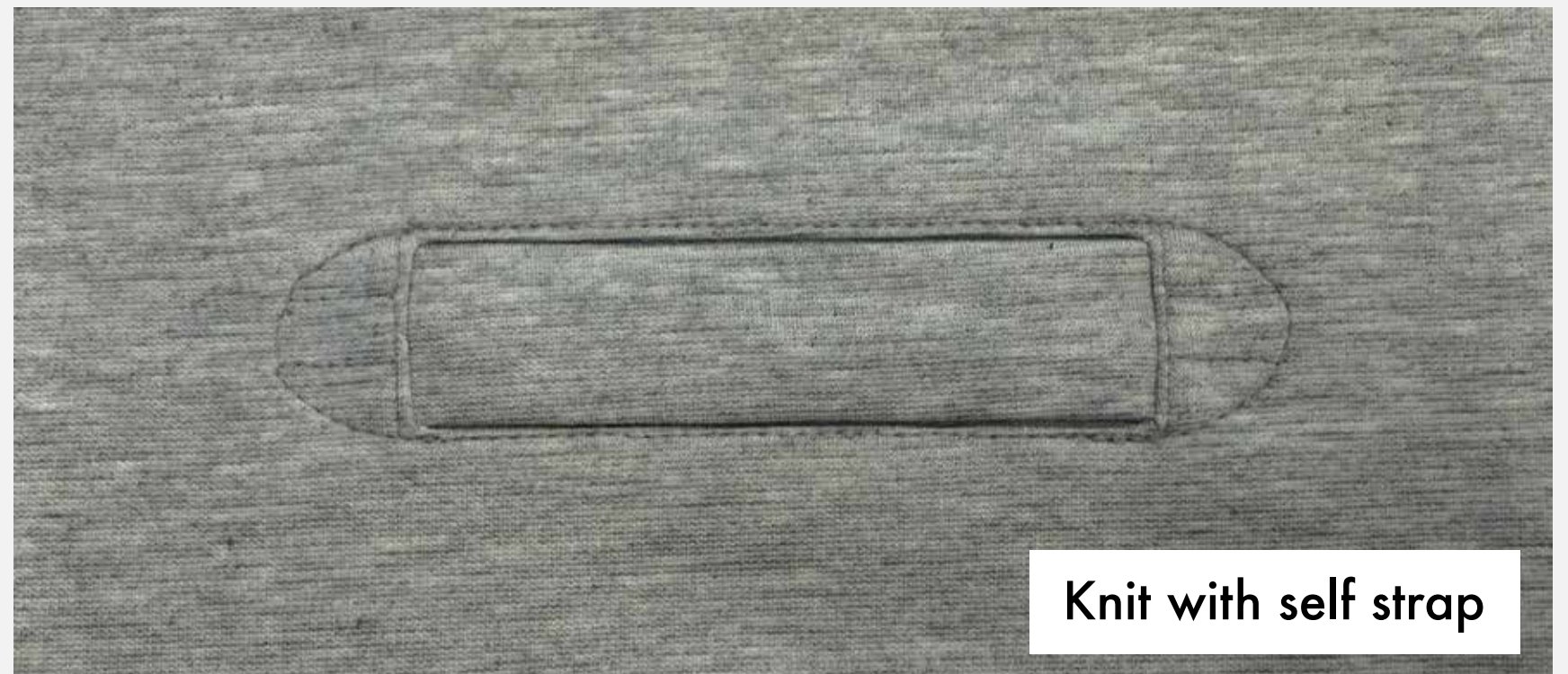


The goal with this 'quiet luxury' branding is to brand the products with a unique detail special to the brand. It becomes synonymous with the brand itself like Bottega's intrecciato.

Can be applied to many different garments and fabrics. Adding this detail to a basic shirt could elevate both the product and the price tag.

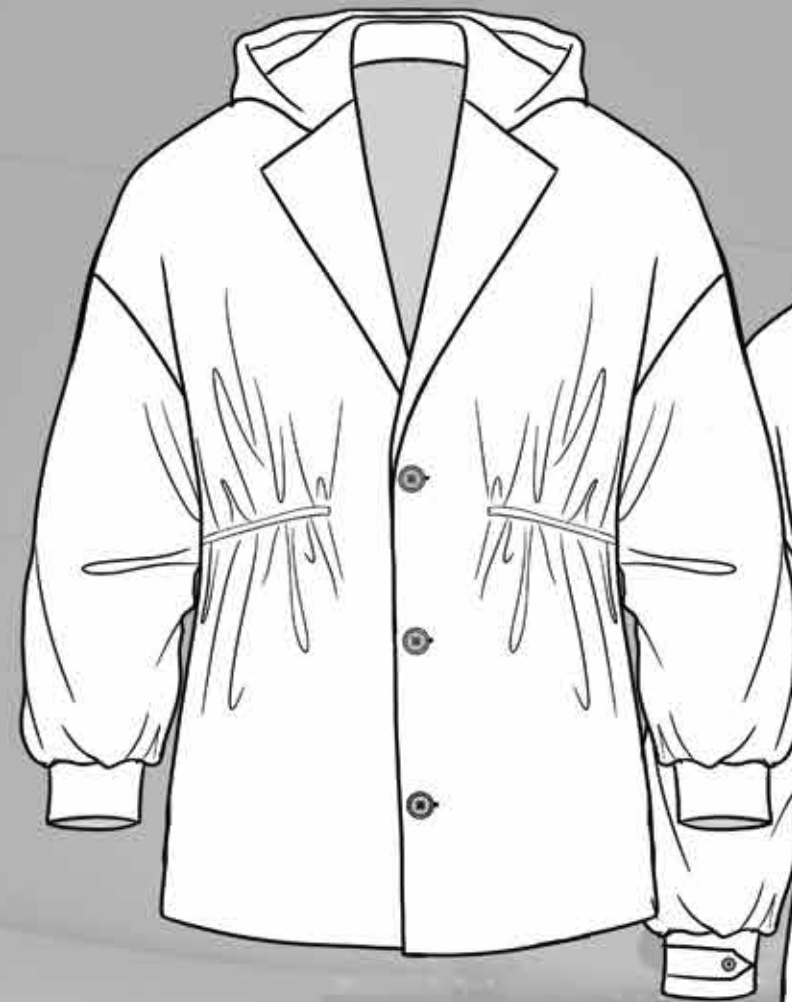


Pull inspiration from classic football stitch



Knit with self strap



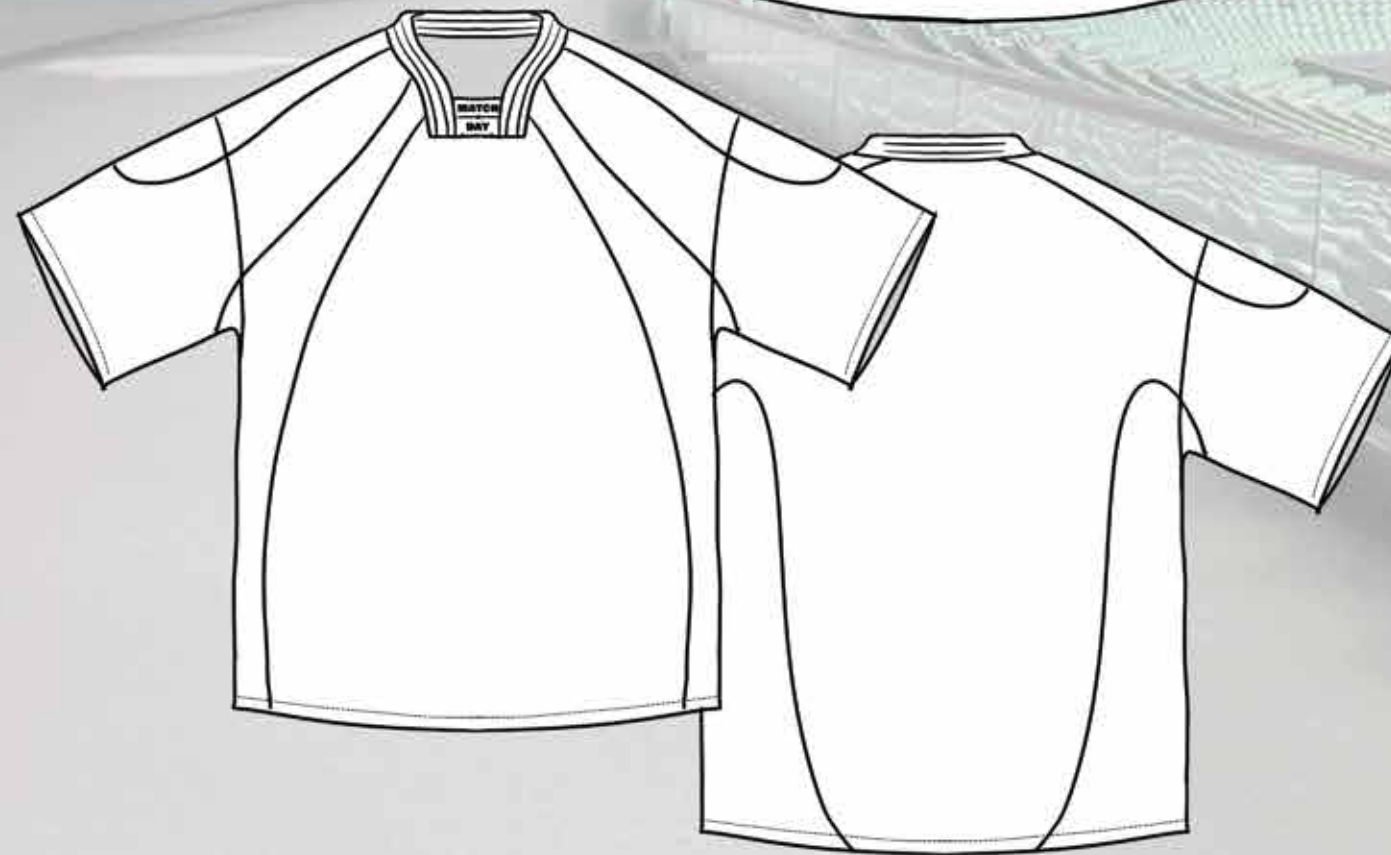


*Structural detail 2,
zig zag stitch cinch*



*Partially elasticated
waistband*

Structural detail 4

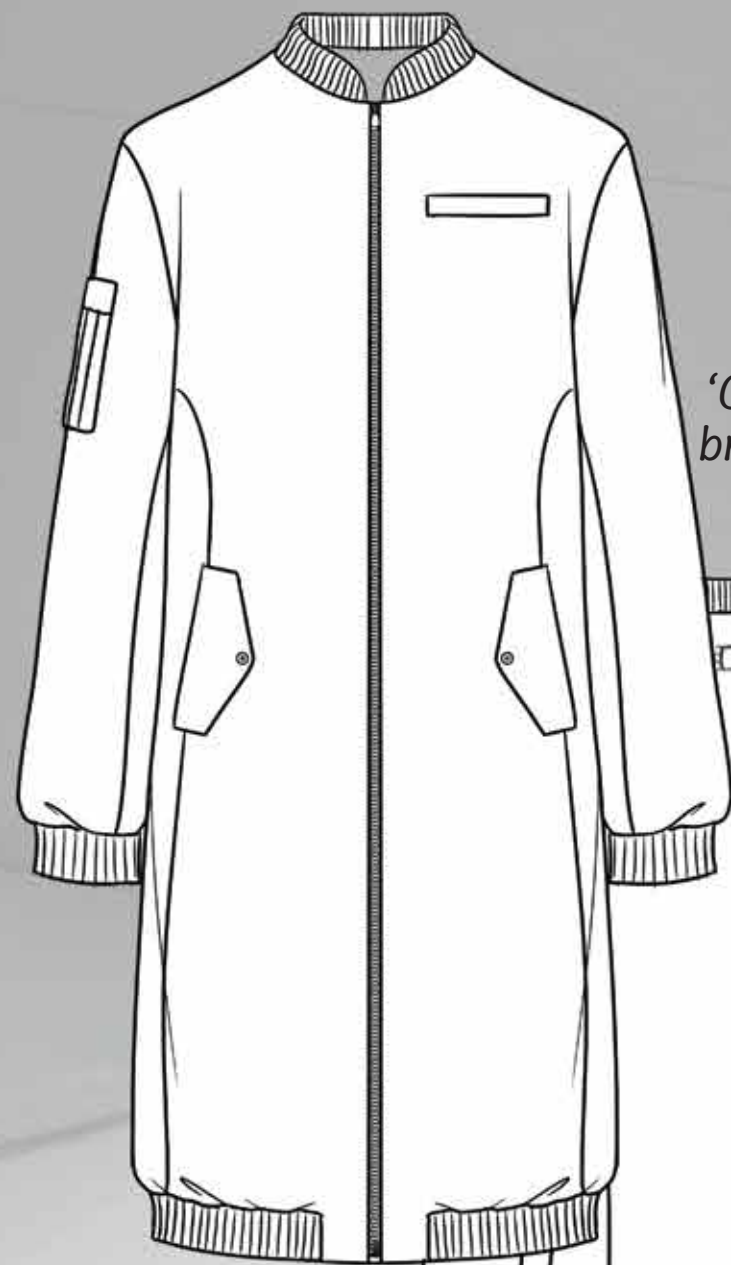


Monotone mesh panelling



*Side zip with
mesh underlay*

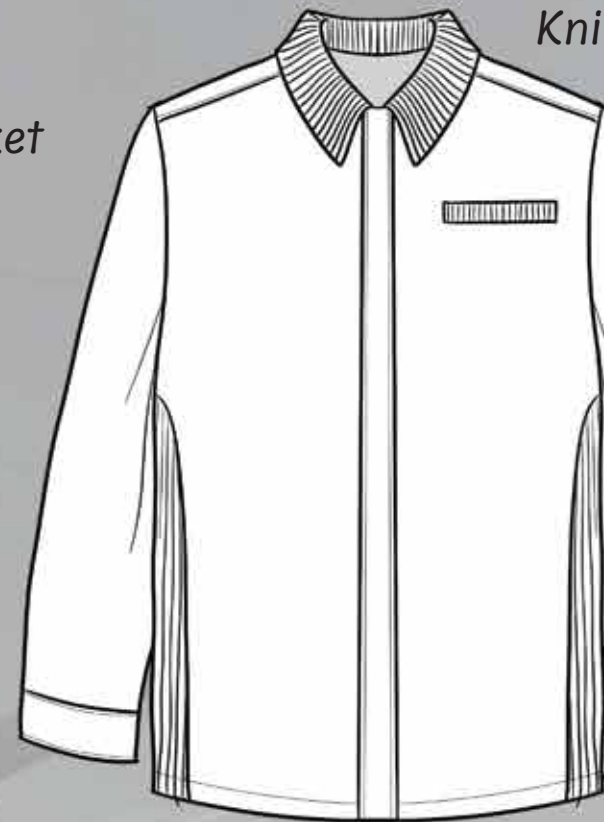
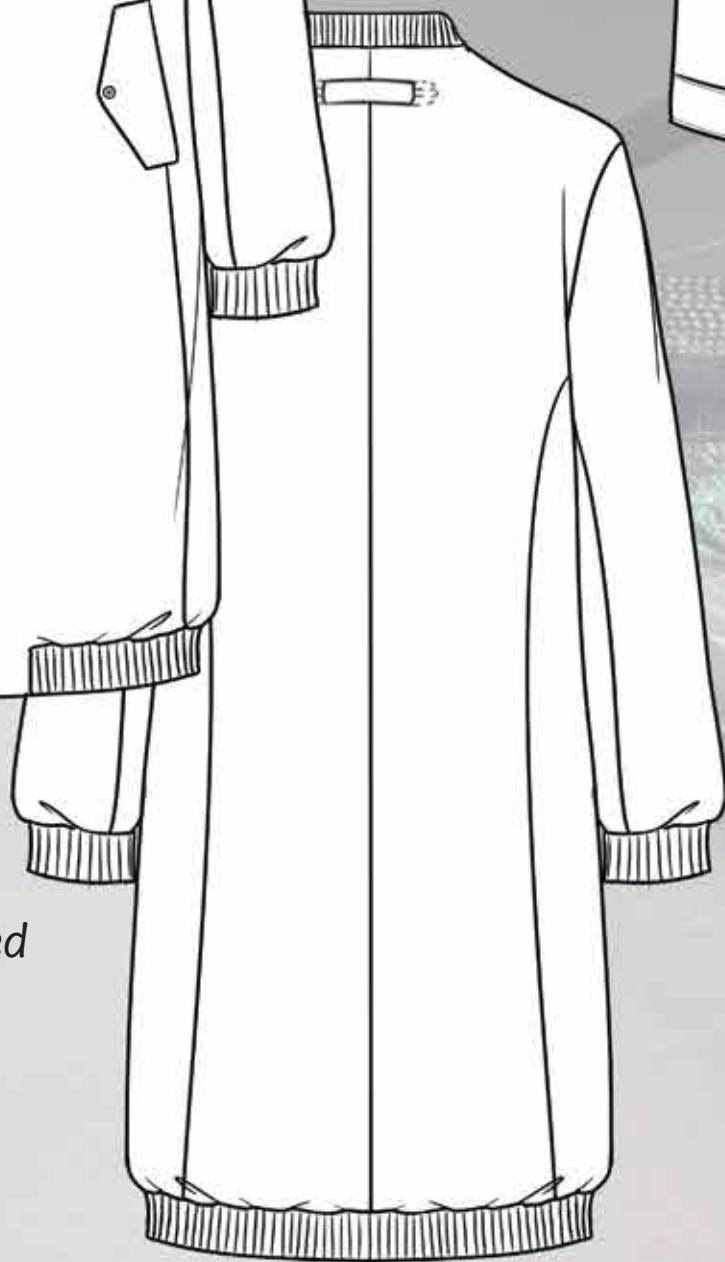
*'Quiet Luxury'
branding strap*



Covered placket

'Quiet Luxury'
branding strap

Extended, tailored
bomber

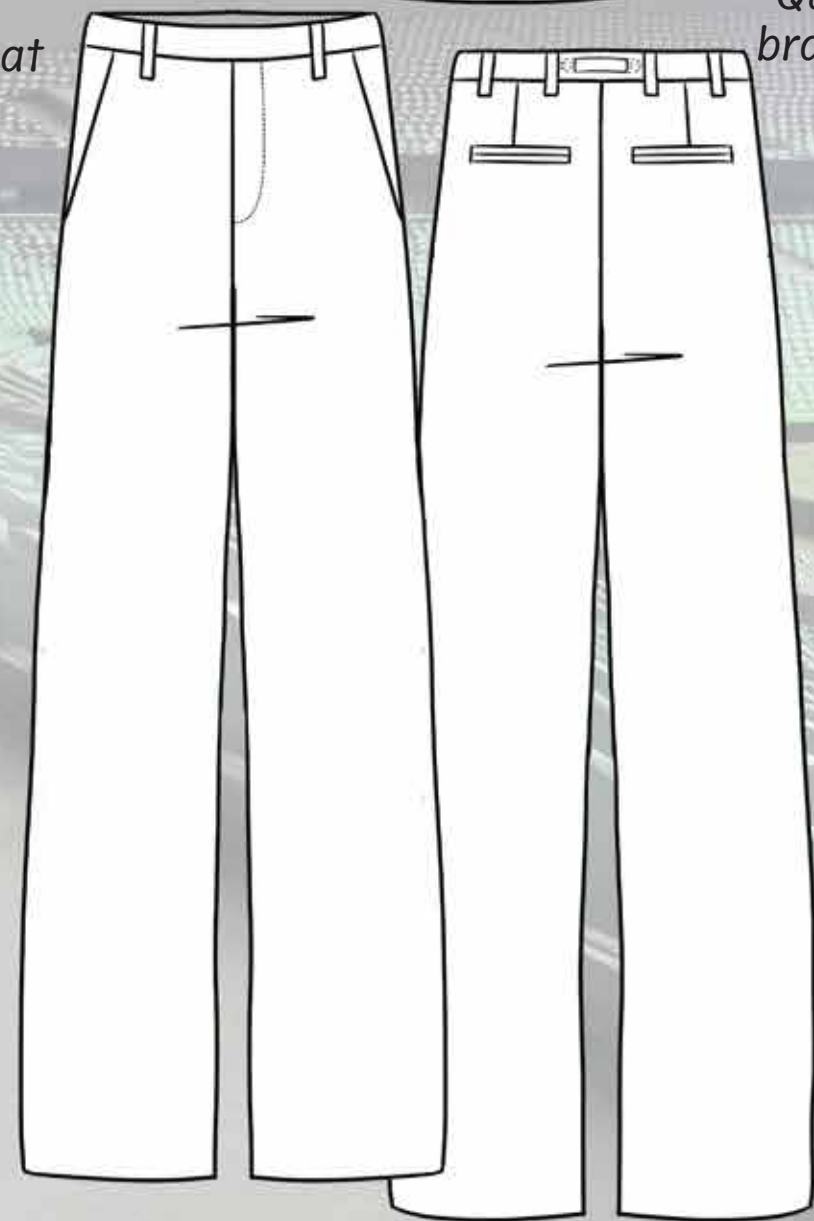


Knit shirt



'Quiet Luxury'
branding strap

Rib paneling at
sides

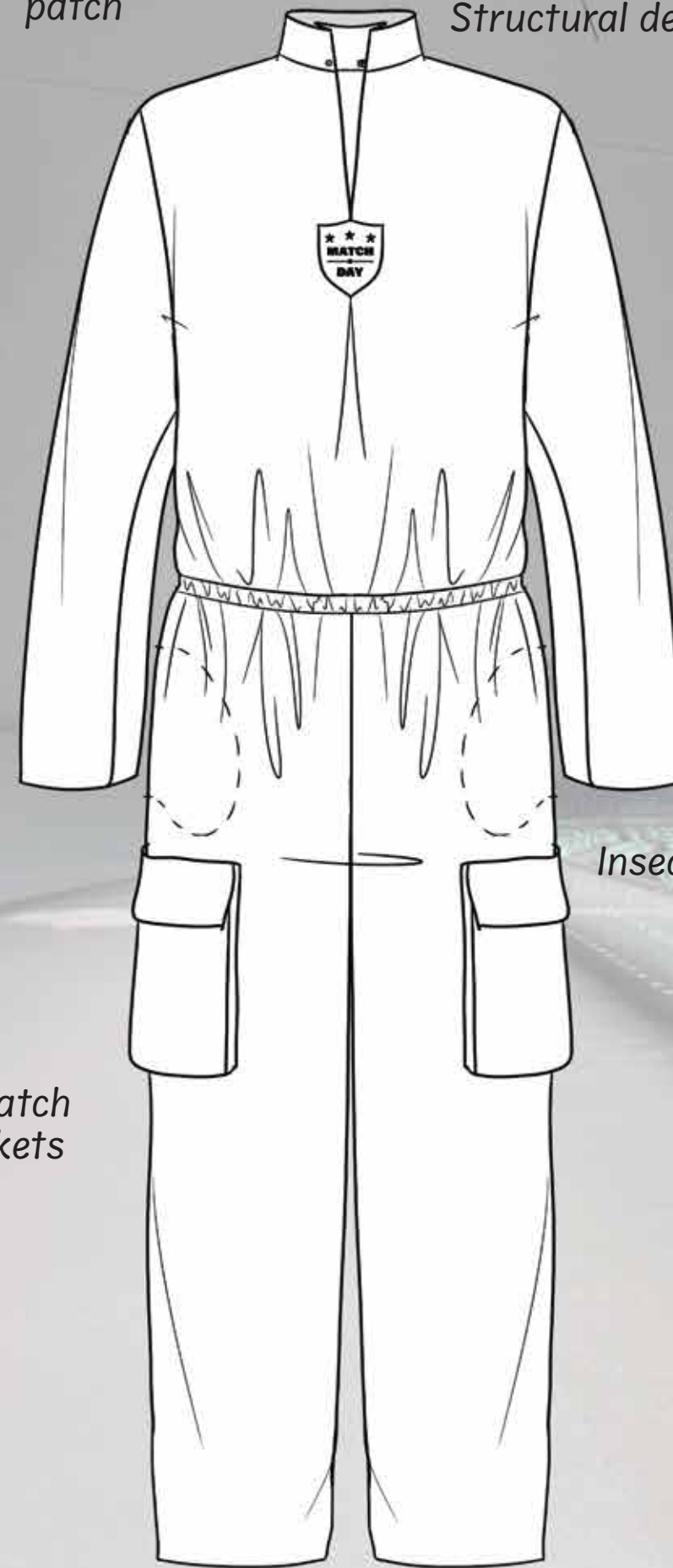


'Quiet Luxury'
branding strap



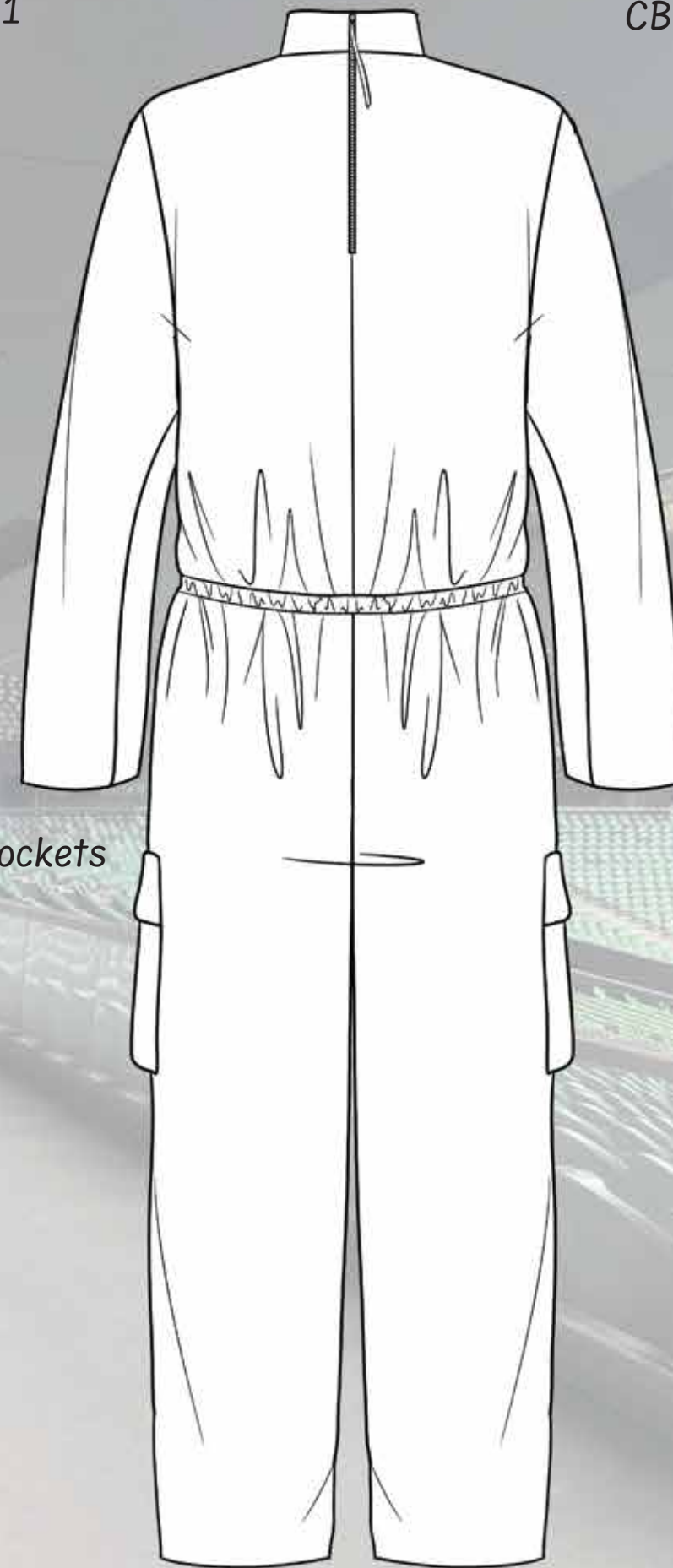
Branded logo patch

3D patch pockets



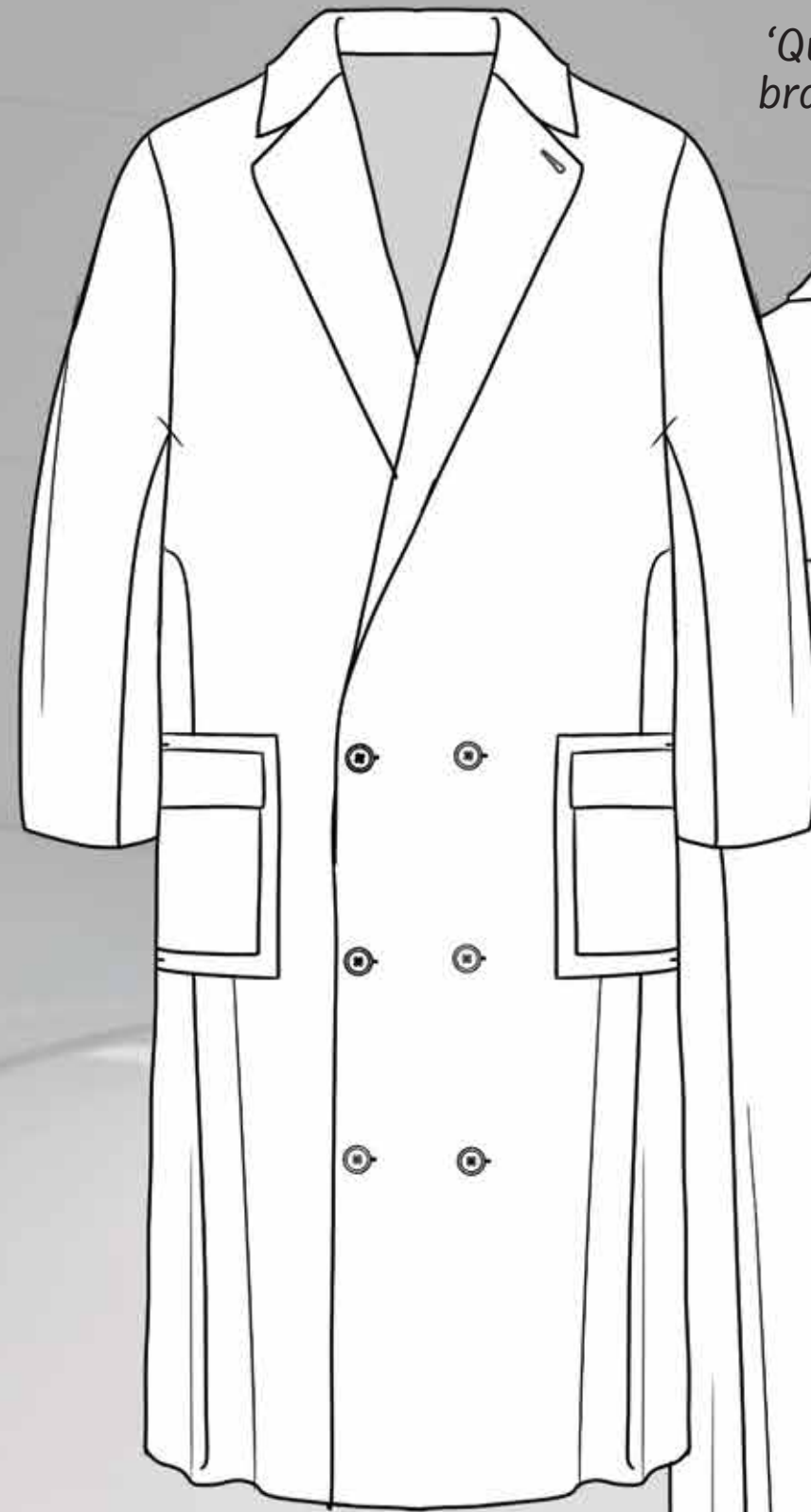
Structural detail 1

Inseam pockets



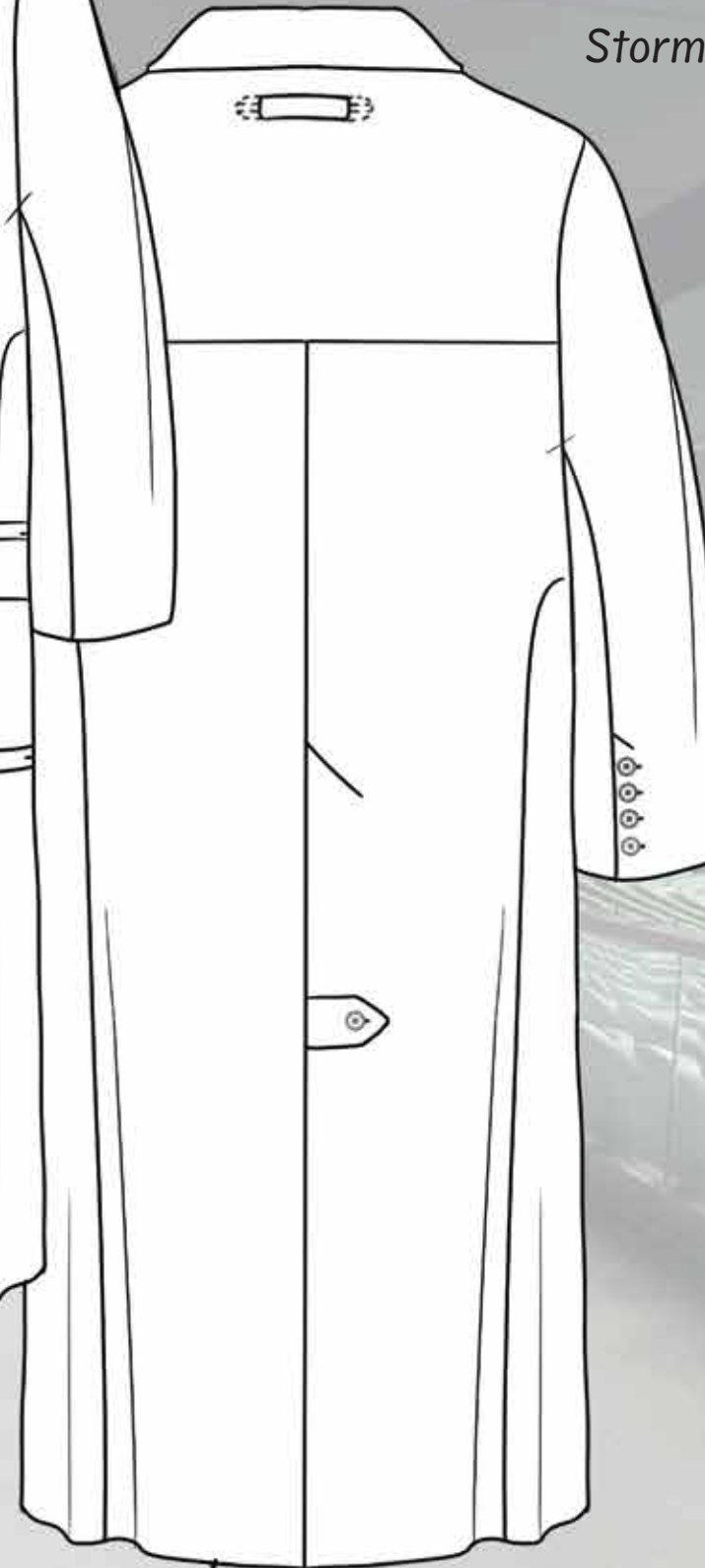
CB zipper opening

Structural detail 2, zig zag stitch cinch



Patch pockets with side and flap openings

'Quiet Luxury' branding strap



Back strap secures extended vent

Lightly padded raglan jacket with hood

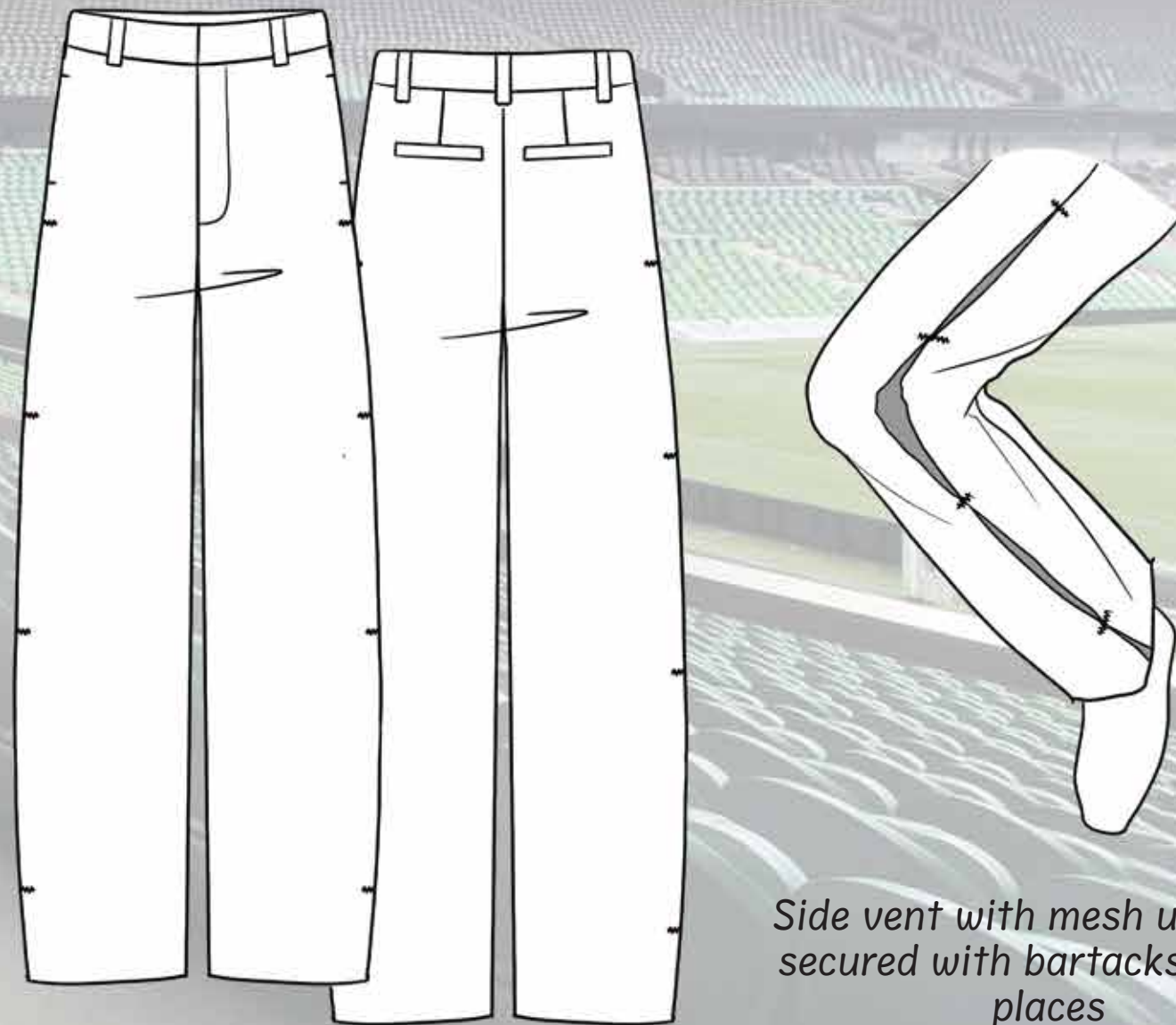
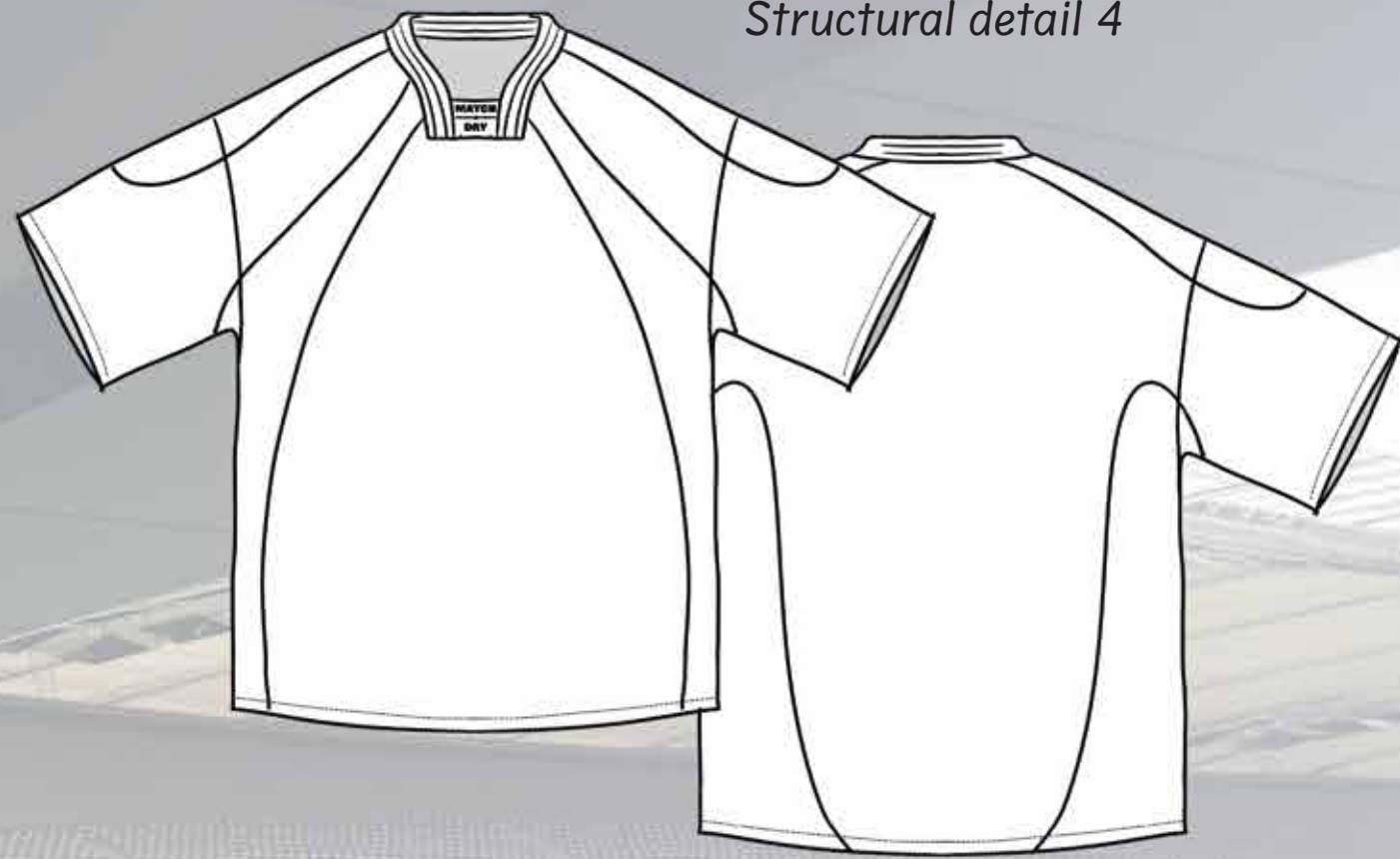


Storm flap

Logo quilting



Structural detail 4



Side vent with mesh underlay,
secured with bartacks in four
places



